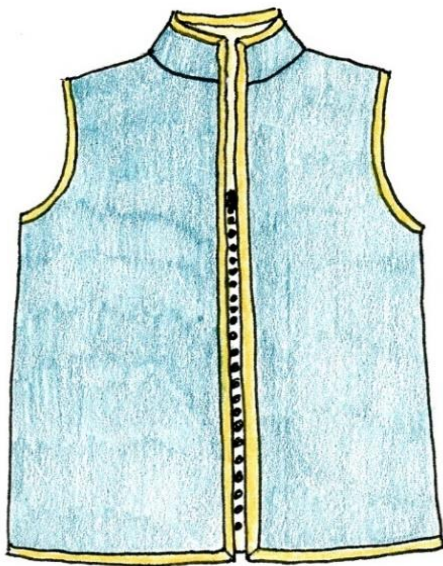
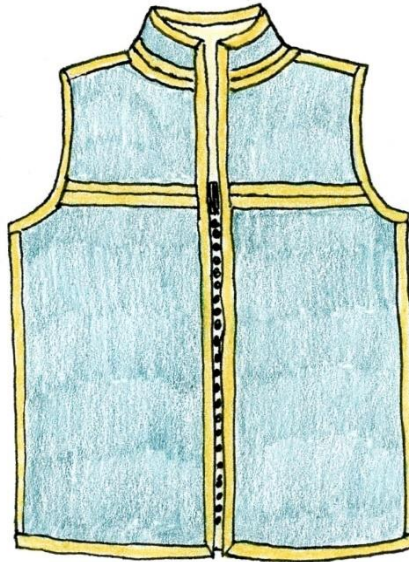




800
Zippered
Vest
INSTRUCTIONS
A or B



VIEW 1



VIEW 2



The 800 Zippered Vest is fully lined to the edge and has bias bound edges. The vest has a stand-up collar with front separating zipper. View 2 uses the lining as a seam finish on the side, shoulder and neckline/collar seams. Optional yoke on both views.

<https://www.weaversew.com/shop/800-zippered-vest.html>

A has no darts, B has a horizontal bust dart.

Size	Finished Bust Circumference		Finished lower width		Finished Length
	A	B	A	B	
Brown	36" (91.4cm)	NA	36 5/8" (93cm)	NA	25 3/4"(65.4cm)
Green	38 7/8" (98.7cm)	39 3/4" (100.9cm)	39 3/4" (101.2cm)	41 1/4" (104.7cm)	26 3/4"(67.9cm)
Red	41" (104.1cm)	43" (109.2cm)	43 1/4" (109.8cm)	44 1/2" (113cm)	27 1/2"(69.8cm)
Blue	44 7/8" (113.9cm)	45 5/8" (115.8cm)	46 5/8" (118.4cm)	47 1/2" (120.6cm)	28 1/2"(72.3cm)
Orange	48" (121.9cm)	48 3/8" (122.8cm)	49 5/8" (126cm)	50 1/4" (127.6cm)	29 1/2"(74.9cm)
Purple	NA	50 7/8" (129.2cm)	NA	53" (134.6cm)	30 1/4"(76.8cm)
Lime	NA	53 3/8" (135.5cm)	NA	56" (142.2cm)	31 1/8"(79cm)

Yardage requirements:

Yardage requirements assume that you are using a one-way design, so that all the pattern pieces will be cut in the same direction. However, handwoven fabric can often be cut in both directions so that pattern pieces can nest close to each other, which requires less fabric. Matching weft patterning and hand-painted warps will require more fabric.

	18"(46cm)	24"(61cm)	36"(92cm)	45"(115cm)	60"(150cm)
Brown	3 1/4 yds (2.9m)	1 3/4 yds (1.5m)	1 3/4 yds (1.5m)	1 yd (92cm)	1 yd (92cm)
Green	3 1/2(3.1m)	1 3/4(1.5m)	1 3/4(1.5m)	1 (92cm)	1 (92cm)
Red	3 1/2(3.1m)	2 3/4(2.5m)	2 (1.8m)	1 3/4(1.5m)	1 (92cm)
Blue	3 3/4(3.4m)	3 3/4(3.4m)	2 (1.8m)	2 (1.8m)	1 (92cm)
Orange	3 3/4(3.4m)	3 3/4(3.4m)	2 (1.8m)	2 (1.8m)	1 (92cm)
Purple	4 (3.6m)	4 (3.6m)	2 (1.8m)	2 (1.8m)	1 (92cm)
Lime	4 (3.6m)	4 (3.6m)	2 1/4(2m)	2 1/4(2m)	2 (1.8m)

- Lining fabric: Use something with body! Suggested fabrics are linen or lightweight (pinwale) corduroy. Avoid traditional lightweight lining fabrics. Follow the yardage chart above to determine how much 45"(115cm) -wide fabric you will need for your size vest. **VIEW 2:** Add an additional 1/2 yard (45cm) for bias trim. Be sure to preshrink your lining fabric.
- **VIEW 1:** Contrast for bias trim: Choose a fabric with body, such as linen or lightweight (pinwale) corduroy. 1/2 yard (45cm), 45"(115cm) -wide fabric
- Fusible knit interfacing: 1/8 yard(11cm), 20"(50.8cm) wide
<https://www.weaversew.com/shop/htcw-fusi-knit-interfacing.html>
- #5 20-22"(50-55cm) separating zipper

Recommendations For Handwoven Fabric

My recommendations are to sett your fabric much denser than you would think. Try 8/2 Tencel at 36epi, 10/2 perle cotton at 30, 5/2 at 20, etc. It will ultimately depend on the structure, and your beat and the loom. I have seen fabrics in just about every fiber and combination of fibers you can imagine. Note: The fabric cannot be too thick, because it gets tough fitting multiple layers through the sewing machine. Any fiber works, if you can weave it, but I find woven cloth for garments will have the best results if at least part of the fabric is a protein content, like wool, which can be fullled up to create a denser, more stable fabric.

Sampling can be advantageous here. I have had students produce wonderful fabrics with a cotton or Tencel warp and [Jaggerspun's Zephyr \(wool/silk\)](#) weft, or [Webs' Colrain Lace \(Merino/silk\)](#), which can be fullled up for a stable, dense but pliable fabric, great for a jacket or vest. The fabric for this vest should be really stable since it is lined to the edge and bound off with bias strips. Note: A knit interfacing can be fused to the wrong side of the fabric to add stability. <https://www.weaversew.com/shop/htcw-fusi-knit-interfacing.html>

Start with commercial fabric if you are intimidated. Commercial fabric can give you an idea of what weights work for this silhouette. Here are some of my basic suggestions when working with handwoven cloth:

- Sett it denser than you think.
- Avoid long floats, which make a fabric less stable.
- If you want a lighter fabric, choose a thinner yarn, not a looser sett.
- Avoid weft patterning, repeats and blocks. They are hard to match for side seams and such.
- **If you use a hand-painted warp, make sure there is a repeat!**
- Wash it well.



Wash Your Fabric!

<https://youtu.be/ivqviCQqL88>

Finishing is important. **ALL FABRICS SHOULD BE WASHED PRIOR TO SEWING!**

The exception here would be fabrics that were processed, dyed, felted, steamed, etc. They would already be preshrunk. If using handwoven fabric, or something commercial that has not been in contact with moisture, steam, water, or whatever, please machine wash your completed fabric **AT A MINIMUM** on **GENTLE CYCLE** for 3 minutes in **COLD OR WARM WATER** using a laundry detergent. This is even suitable for wool and mohair. Fabric may be hung to dry or machine dried if the fabric warrants this type of processing. Test, Test, Test! When fabric is completely dry, it should be steam pressed. You could even have the dry cleaner press it if your iron is inadequate.

Digital monographs for sewing handwovens, seam finishes, edge finishes and closures are available for purchase from my website.

<https://www.weaversew.com/shop/digital-monographs.html>



What to Do With A Digitally Downloaded Pattern

https://youtu.be/14_iQKfTfiw



Tracing Patterns for Better Results

<https://youtu.be/bQiRn7tMCIQ>

NOTES FOR CUSTOMIZING THE PATTERN FOR YOUR BODY:

- **Test the Pattern first.**



What Size Am I Part 1

<https://youtu.be/MjkRSwMku30>



What Size am I part 2

<https://youtu.be/OxBP7DpeN5o>

- Review the tutorial on darts, there are two fronts, one with a dart, and one without.



Darts in Handwoven Cloth Part 1

<https://youtu.be/ipj1zeFvBUQ>

There is a generous amount between my sizes, so consider cutting between two sizes for a more custom fit.

- For fuller hips, consider combining sizes, for example – green for the upper body transitioning to the larger red size for the lower body.



How to Combine Sizes When a Dart Gets in the Way

<https://youtu.be/4ljoWkrpc3k>



Back Neck Woes

<https://youtu.be/kA7s1slnuYA>

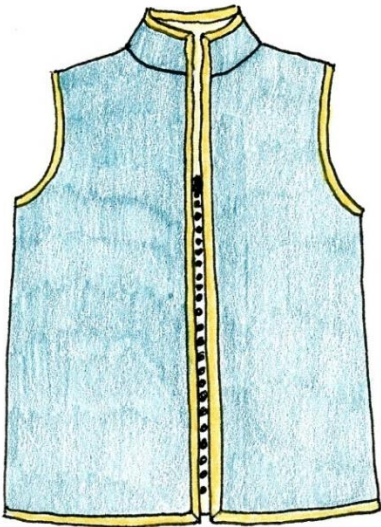
For more information on basic pattern alterations, please download the free PDF tutorial from my website

<https://www.daryllancaster.com/Webfiles/BasicPatternAlterations.pdf>

Basic Vest Directions

Note: There are two views of this vest. Both have an optional front and/or back yoke. It is important to decide which view you are making **before you cut out the garment and lining.**

VIEW 1:



The same pattern pieces are used for both the vest and the lining. Edges of vest are bound with a contrasting bias strip. These bias strips are cut from the lining or another contrasting fabric.

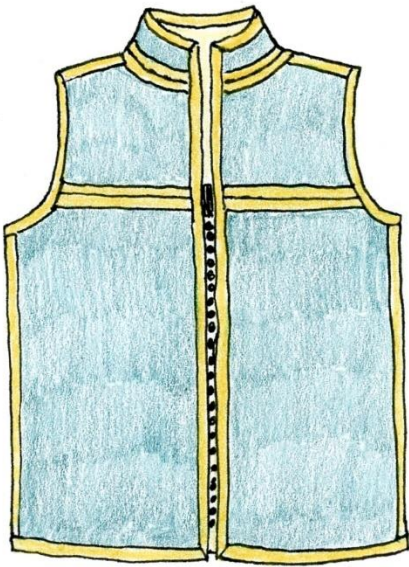


View 1 has an optional yoke in either the front and/or the back. The FRONT and/or BACK patterns are cut apart on the yoke line and $\frac{5}{8}$ " (1.5cm) seam allowances are added to the yoke seamlines on all pattern pieces. (Note: the lining may be left as one piece)

FRONT and/or BACK patterns are cut apart on the yoke line and seam allowance added.

$\frac{5}{8}$ " (1.5cm) seam allowances are included for the side, shoulder, and collar seams. There is **no hem allowance** and **no front and armhole seam allowances**; they will be bound with bias strips.

VIEW 2:

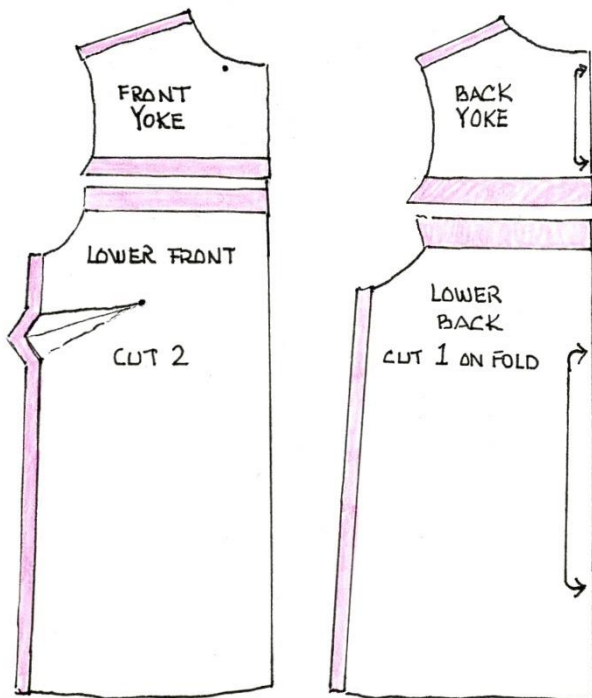


The same pattern pieces are used for both the vest and the lining, with **changes to the lining pattern shown in red below**. The lining wraps to the outside to become the seam finish on the shoulders, side seams, collar seam and optional yokes. For continuity, the outer edges of vest, including collar and armholes, are bound with the same fabric as the lining. Choose a fabric with body, such as linen or lightweight corduroy.

Before cutting the lining, add additional seam allowances at the side and shoulders! SEE BELOW.

TIP: It will be helpful if the pattern pieces are traced twice, one set for the vest and one set for the lining! Less chance of a mistake!

For VIEW 2 optional yoke front and/or back, cut pattern apart on the yoke line. **Do not** add seam allowances to **vest** yoke and lower front/back pattern pieces.



For the lining, add 1" (2.5cm) seam allowances to yoke and lower front/back **lining** pattern pieces at the yoke seam lines.

Add an additional **3/8" (1cm)** to the side and shoulder seam allowances on the lining **only**, bringing the total side and shoulder seam allowances of the lining to 1" (2.5cm).

Note: Neck, side seam and shoulder seam allowances on vest fronts and back will eventually be removed.

Lining pattern is cut apart on the yoke line and seam allowances added. Additional seam allowances are added at the shoulder and side seams.

Vest Directions


CUTTING OUT THE VEST

Handwoven fabrics are typically 18"(46cm) or 24"(61cm) - wide. Since the pattern was drafted with the center back placed on a fold, you will need to make an adjustment for these narrow fabrics. To do this, add a $\frac{5}{8}$ "(1.5cm) seam allowance to the center back. When you cut out your vest, align this new center back cutting line with the selvedge so the seam will automatically have a clean finish OR consider using the lining as a seam finish, as explained in VIEW 2 directions. Add 1" to each center back for the lining, see page VI.



- Roll out needle-ready fabric right side up
- Cut singly
- Check grainlines
- Don't forget to flip pattern pieces

Please review the following YouTube video before cutting out the vest.

 *No Seam Allowance? No Problem! Just use the Lining!*
<https://youtu.be/cX5fhmuzhRc>

VIEW 1 CUTTING DIRECTIONS:

USE TAILOR'S TACKS TO TRANSFER ALL DOTS AND MARKINGS.



 *Transferring Marks and Notations from Pattern to Fabric*
<https://youtu.be/NNzkpx074tc>

FROM HANDWOVEN FABRIC, cut singly:

- **1 BACK OR LOWER BACK:** To cut a full back or lower back, pin pattern in place and cut one half up to center back line. Unpin and carefully flip at center back line,

keeping the lower edges aligned; repin pattern piece and finish cutting out back **or lower back**. If fabric is too narrow for a full back, add $\frac{5}{8}$ "(1.5cm) seam allowance to center back edge before cutting and cut 2 backs.

- **2 FRONTS OR LOWER FRONTS:** Cut one and flip for the second.
- **1 OPTIONAL YOKE BACK AND/OR 2 OPTIONAL YOKE FRONTS:** These may be cut on the lengthwise grain or the crosswise grain.
- **1 COLLAR:** Pin pattern in place and cut one half up to center back line. Unpin and carefully flip at center back line, keeping the lower edges aligned; repin pattern piece and finish cutting out collar.



Interfacing, Underlining, Interlining, Oh My!

<https://youtu.be/LdloCBSm4WE>

FROM FUSIBLE INTERFACING, cut:

- **1 COLLAR** on the fold.

FROM LINING, cut:

Note: If the FRONT and/or BACK pattern pieces were cut apart for the optional yoke, pin or tape the pieces back together before cutting out the lining.

- **1 BACK:** Place center back on fold.
- **2 FRONTS:** Fold fabric and cut 2.
- **1 COLLAR:** Place center back on fold.
- 6 yards(5.5m) of **2 ¼"(5.7cm) -wide bias** for edge finishes. Note: These strips may be cut from a contrasting fabric, choose a fabric with body, such as linen or lightweight corduroy. See page XXIV for a tutorial on cutting bias strips.



Creating Bias Strips for Seam and Edge Finishes for Handwoven

Fabrics <https://youtu.be/XMWwZ IMWCo>

Use pencil, dressmaker's carbon, chalk or disappearing marker to transfer all markings to lining.

VIEW 2 CUTTING DIRECTIONS:

USE TAILOR'S TACKS TO TRANSFER ALL DOTS AND MARKINGS.



Transferring Marks and Notations from Pattern to Fabric

<https://youtu.be/NNzkpx074tc>

FROM HANDWOVEN FABRIC, cut singly:

- **1 BACK OR LOWER BACK:** To cut a full back or lower back, pin pattern in place and cut one half up to center back line. Unpin and carefully flip at center back line, keeping the lower edges aligned; repin pattern piece and finish cutting out BACK OR LOWER BACK. If fabric is too narrow for a full back, add $\frac{5}{8}$ "(1.5cm) seam allowance to center back edge before cutting and cut 2 backs. **NOTE: To add another design feature, cut the back or lower back apart on the center back line and use the lining as a decorative seam finish.**
- **2 FRONTS OR LOWER FRONTS:** Cut one and flip for the second.
- **1 OPTIONAL YOKE BACK AND/OR 2 OPTIONAL YOKE FRONTS:** These may be cut on the lengthwise grain or the crosswise grain.
- **1 COLLAR:** Pin pattern in place and cut one half up to center back line. Unpin and carefully flip at center back line, keeping the lower edges aligned; repin pattern piece and finish cutting out collar.



Interfacing, Underlining, Interlining, Oh My!

<https://youtu.be/LdloCBSm4WE>

FROM FUSIBLE INTERFACING, cut:

- **1 COLLAR** on the fold.

FROM LINING, cut:

- **1 BACK OR LOWER BACK:** Place center back on fold. **Be sure to add $\frac{3}{8}$ "(1cm) additional seam allowance to shoulder and side seams** and if optional yokes are used, add 1"(2.5cm) seam allowance to the yoke seam seamline. **NOTE: Add 1"(2.5cm) seam allowances to either side of the center back if cutting apart and using the lining as a decorative finish.**
- **2 FRONTS OR LOWER FRONTS:** Fold fabric and cut 2; no need to cut singly. **Be sure to add $\frac{3}{8}$ "(1cm) additional seam allowance to shoulder and side seams** and if optional yokes are used, add 1"(2.5cm) seam allowance to the yoke seamline.
- **1 COLLAR:** Place center back on fold.
- **1 OPTIONAL YOKE BACK AND/OR 2 OPTIONAL YOKE FRONTS:** Place center back on fold and/or cut two fronts, no need to cut singly. **Be sure to add $\frac{3}{8}$ "(1cm) additional seam allowance to shoulder seams** and if optional yokes are used, add 1"(2.5cm) seam allowance to the yoke seamline.
- 6 yards(5.5m) of **2 ¼"(5.7cm) -wide bias** for edge finishes. **Note:** The lining will become the seam finish on the shoulders, side seams, collar seam and optional yokes. Edges of vest and collar seams are bound with the same fabric as the lining, for continuity. Choose something with body i.e. linen or lightweight corduroy. See page XXIV for a tutorial on cutting bias strips.

Use pencil, dressmaker's carbon, chalk or disappearing marker to transfer all markings to lining.



Creating Bias Strips for Seam and Edge Finishes for Handwoven Fabrics https://youtu.be/XMWwZ_IMWCo

ASSEMBLING THE VEST



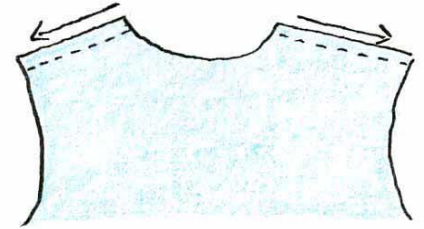
Working with Handwovens: Sewing Basics <https://youtu.be/7UQUNqwSiek>

VIEW 1 BACK AND FRONTS: (VIEW 2 starts on page XI.)

- Recommended machine stitch length for handwoven is 10 stitches per inch (2.54cm).

- For **Back** and **Fronts**, staystitch **shoulder** seamlines only at this time. Using a normal stitch length, stitch $\frac{1}{2}$ "(1.2cm) from the cutting line, neckline to armhole. Repeat for lining.

NOTE: Directional stitching means to stitch in the direction of the fabric grain. Doing this helps keep the fabric from stretching and minimizes any distortion. The arrows on the illustrations indicate the direction to stitch for both staystitching and seam construction.



For a more in-depth discussion of **Staystitching** and **Directional Stitching**, please watch my video at <https://www.threadsmagazine.com/2019/08/23/staystitching-basics-video>

- If the back was cut with a seam down the center back, with right sides together, stitch the center back seam at this time, $\frac{5}{8}$ "(1.5cm) seam allowance. Press seam open.
- With right sides together, stitch optional yoke to lower back, $\frac{5}{8}$ "(1.5cm) seam allowance. Press open. Repeat for lining if yokes are used in the lining.
- For the B pattern, sew front bust darts matching dots. Press flat and then down. Repeat for lining.



Darts in Handwoven Cloth Part 2 https://youtu.be/mUwxFc1I_nY

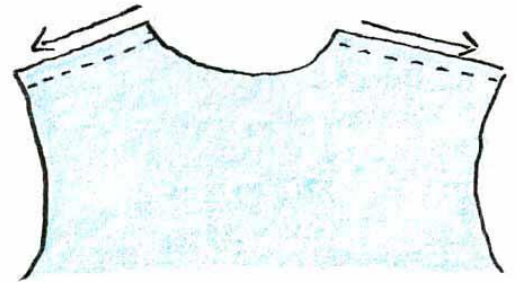
- With right sides together, stitch optional yokes to lower fronts, $\frac{5}{8}$ "(1.5cm) seam allowance. Press open. Repeat for lining if yokes are used in the lining.
- Skip to page XII to attach fronts to back.

VIEW 2 BACK AND FRONTS:

- Recommended machine stitch length for handwovens is 10 stitches per inch (2.54cm).

- For **Back** and **Fronts**, staystitch **shoulder** seamlines only at this time. Using a normal stitch length, stitch $\frac{3}{4}$ "(2cm) from the cutting line, neckline to armhole. **Yes, that is correct, $\frac{3}{4}$ "(2cm)!**

NOTE: Directional stitching means to stitch in the direction of the fabric grain. Doing this helps keep the fabric from stretching and minimizes any distortion. The arrows on the illustrations indicate the direction to stitch for both staystitching and seam construction.



For a more in-depth discussion of **Staystitching** and **Directional Stitching**, please watch my video at <https://www.threadsmagazine.com/2019/08/23/staystitching-basics-video>

- For the B pattern, sew front bust darts, matching dots. Press flat and then down. **Repeat for lining.**



Darts in Handwoven Cloth Part 2

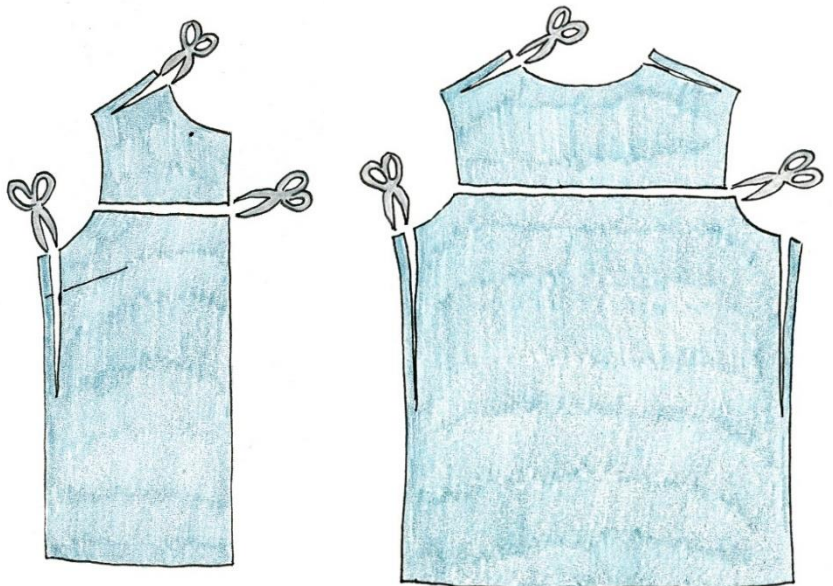
https://youtu.be/mUwxFc1I_nY

- Cut through the yoke seamline(s) if you have not already done so.

- Trim off the $\frac{5}{8}$ "(1.5cm) seam allowances at the shoulders and side seams of the vest fronts and back.

- If there is to be a decorative seam down the center back or lower back, cut through the center back at this time.

- Continue to page XII to attach fronts to back, **VIEW 2**.



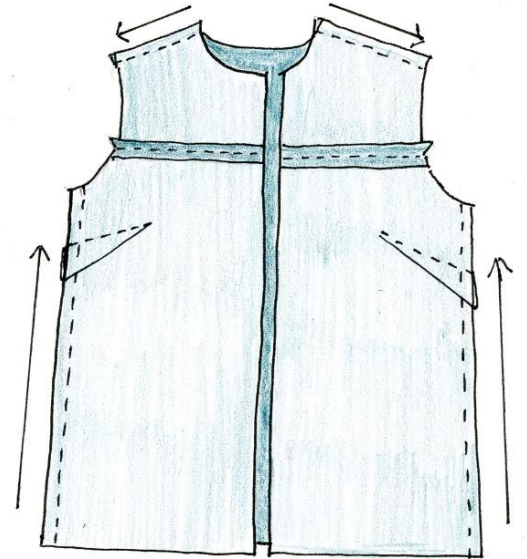
VIEW 1 STITCHING FRONTS TO

BACK:

- With right sides together, pin vest fronts to back at shoulder and side seams and stitch together with a $\frac{5}{8}$ " (1.5cm) seam allowance, following arrows. Press seams open. Repeat for lining.



- Open the vest and place it right side down on a table. Place the lining wrong side down on top of vest so that the lining nests inside the vest.



- Fold the front lining pieces towards the middle to expose the lining front side seam allowance, and the vest front side seam allowance, and pin them together.

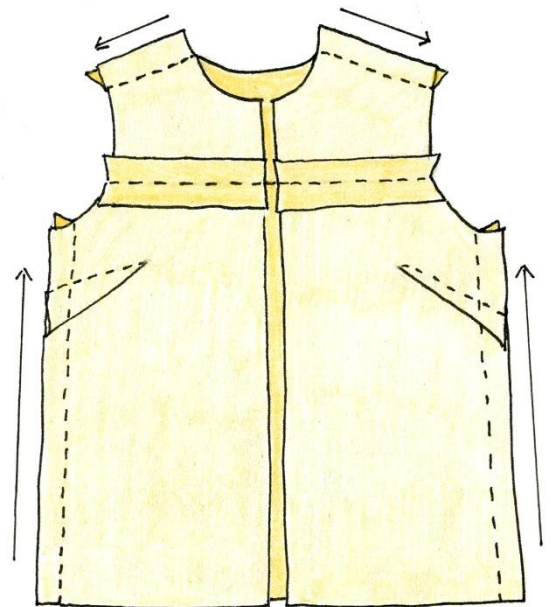
• Hand or machine baste the seam allowances together to keep the vests from shifting away from each other after construction is complete. Continue to page XV for **VIEW 1** collar.

VIEW 2 STITCHING FRONTS TO

BACK:

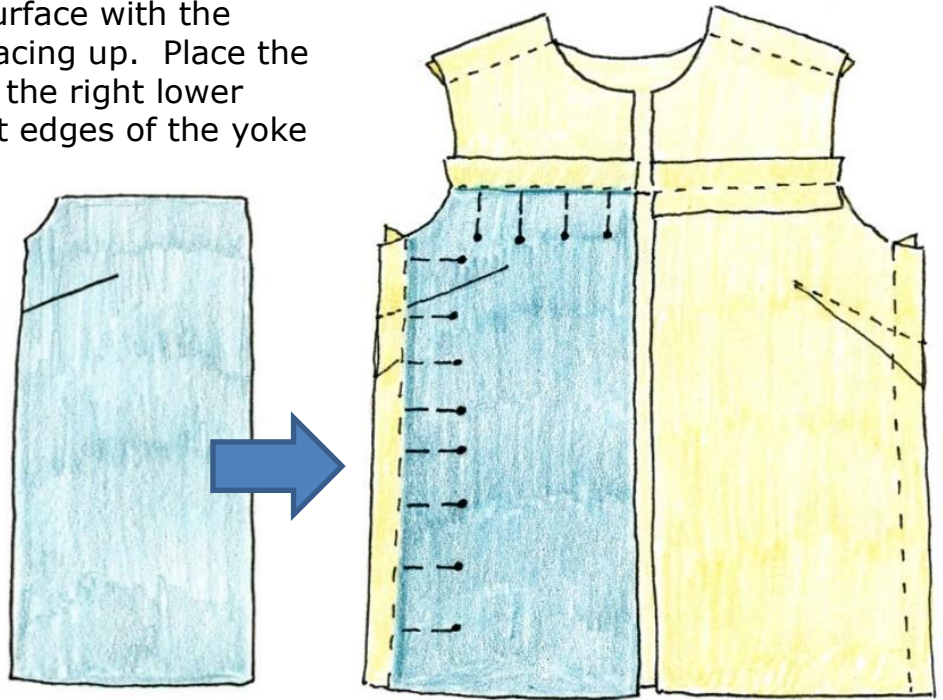
- **Start by assembling the lining.** If the vest has a center back seam, stitch the lining center back seam with right sides together using a **1" (2.5cm) seam allowance!** Press seam open.
- With right sides together, stitch lining front yokes to lining lower fronts and lining back yoke to lining lower back using a **1" (2.5cm) seam allowance!** Press seams open.

NOTE: If there is a center back seam, DO NOT catch its seam allowance in the back yoke seam. To do this, fold the center back seam allowances



out of the way and stitch yoke seam from one armhole to the center back seam; stop stitching and remove the needle from the fabric. Fold the seam allowances to the other side, insert the needle at the center back seam and finish stitching the yoke seam.

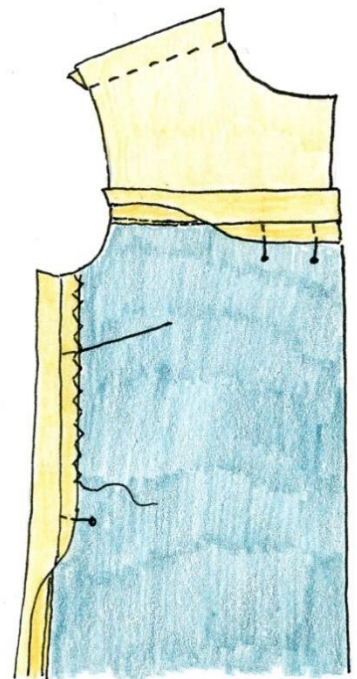
- With right sides together, stitch lining shoulder and side seams together in the direction of the arrows using a **1"(2.5cm) seam allowance!** Press the seams open.
- Place the lining on a flat surface with the wrong side out and front facing up. Place the right lower front vest over the right lower front lining, butting the cut edges of the yoke and side seam against the corresponding lining seamlines. (The wrong side of the vest will be against the wrong side of the lining.)
- Keeping the seam allowances out of the way, carefully pin the vest front to the lining. Position the pin heads away from the seam allowances, as shown.



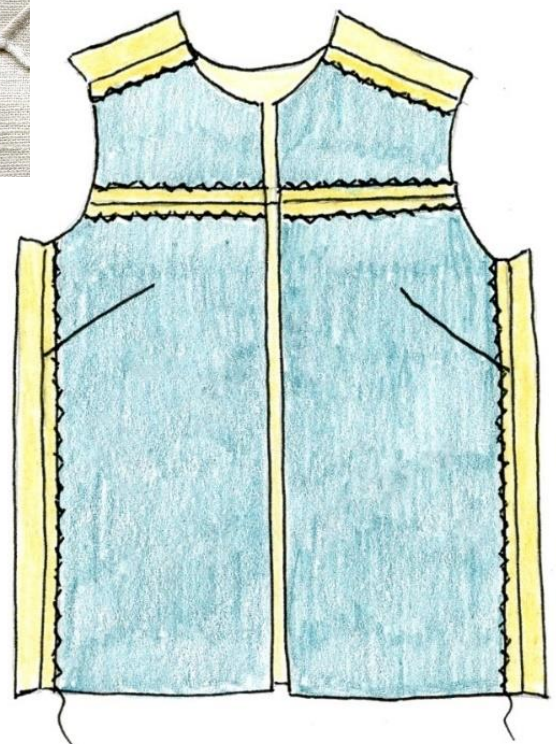
- Turn 1”(2.5cm) yoke and side seam allowances under ½”(1.2cm) or less and then pin folded edges to vest front. Finished visible binding width should be ½”(1.2cm).

- Working from the right side of the vest, stitch the folded edge of the binding in place, through all layers, using whatever stitch you prefer.

TIP: It would be helpful to sample first to see what your machine can do. Many machines have stitch length and width adjustments for their decorative stitches and some have a mirror image function to flip stitches that only lean left or right. Experiment with a narrow zig-zag, appliqué stitch, straight stitch, hem stitch, or if desired, secure by hand with a slipstitch.



- Continue in this manner, placing the second lower front, anchoring with pins, turning the binding under and pinning it to the left vest front lining. Use a decorative stitch as above to stitch the binding down. Repeat this process for the right and left yoke fronts.
- Repeat the entire process for the back and back yokes.
- Continue to page XVI for **VIEW 2** Collar.



Please view the following YouTube video before selecting a collar view.

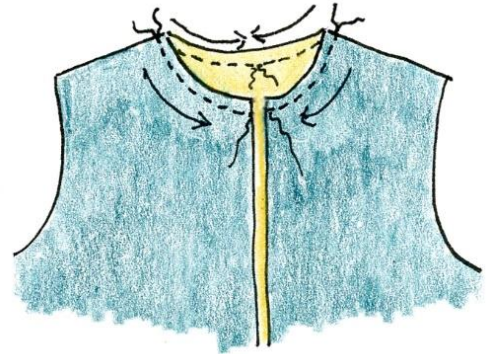


If You Like it Then You Should Just Put a Collar on it.

<https://youtu.be/Ova3kiEIXC8>

VIEW 1 COLLAR:

- Pin vest and lining together at neck edge.
- Staystitch through both layers, using normal length stitches, $\frac{1}{2}$ "(1.2cm) from the cut edges. **Stitch in the direction of the arrows!**
- Place interfacing on the wrong side of the collar lining. **Steam shrink** interfacing by hovering over the surface with a steam iron, then fuse it to wrong side of the collar lining using a press cloth. I recommend silk organza as a press cloth. Make sure markings are still visible.



- With right sides together, pin long marked edge of collar lining to vest lining at neck edge, matching symbols. **Clip neckline where necessary for a smooth fit.**



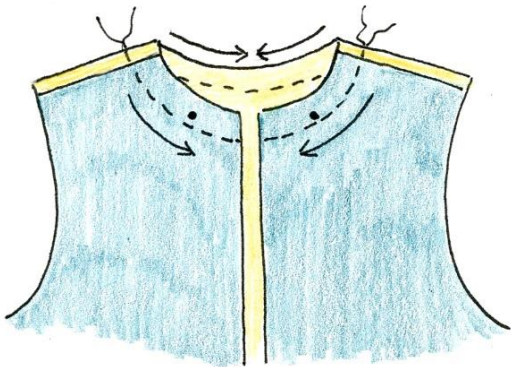
- With right sides together, pin long marked edge of vest collar to vest at neck edge, matching symbols. **Clip neckline where necessary for a smooth fit.**

NOTE: Neckline should be sandwiched between the two collars.

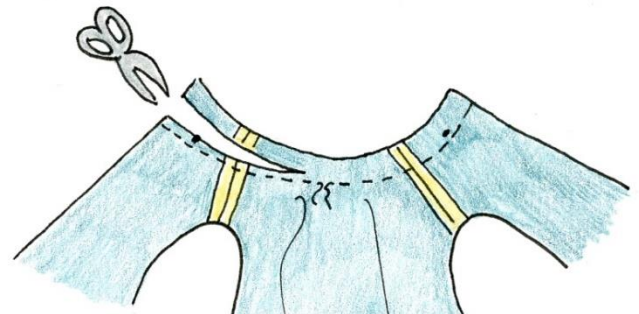
- Stitch through all layers using a $\frac{5}{8}$ "(1.5cm) seam allowance.
- Grade seam allowances to reduce bulk [trim collars to $\frac{1}{4}$ "(6mm) and neckline to $\frac{3}{8}$ "(1cm)].
- Press collars away from neck edge.
- Skip to page XVIII for edge binding.

VIEW 2 COLLAR:

NOTE: The **VIEW 2** collar is a bit challenging. It is absolutely acceptable to substitute the **VIEW 1** collar construction. See page XV.

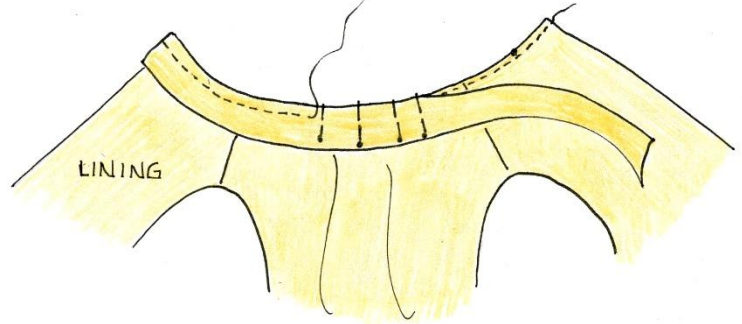


- Pin vest and lining together at neck.
- Staystitch, using normal length stitches, through both layers, $\frac{3}{4}$ "(2cm) from cut edges. **Stitch in the direction of the arrows!**



- **Trim off $\frac{5}{8}$ "(1.5cm) seam allowance at neckline. Be sure to preserve markings.**

- Pin right side of a bias strip to **lining side** of neckline keeping the edge of binding even with the trimmed edge of neckline.



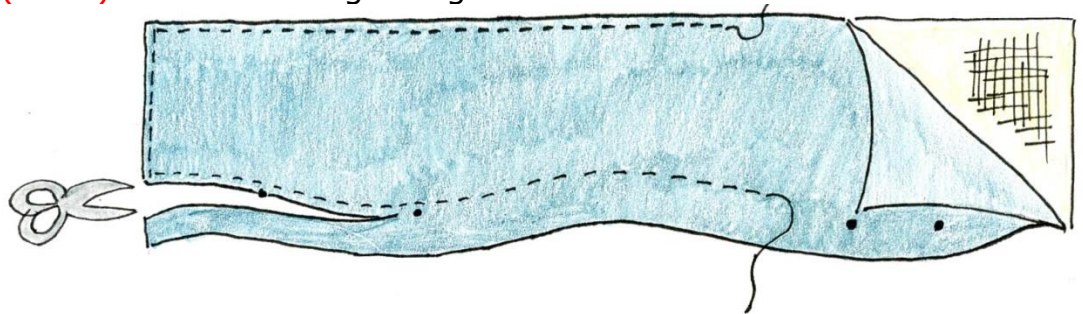
- Stitch $\frac{1}{2}$ "(1.2cm) from trimmed edge. Press binding away from neckline.

- Steam shrink and fuse interfacing to back of collar lining. Make sure markings are still visible.

- Place the collar and collar lining wrong sides together, pinning securely around all edges.

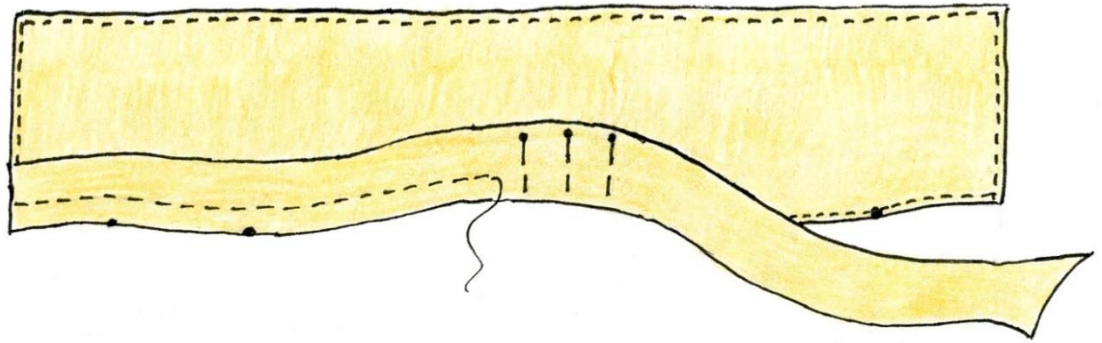
- Machine baste $\frac{1}{8}$ "(3mm) from the straight edges of the collar.

- Baste $\frac{3}{4}$ "(2cm) from curved marked edge of the collar.



- **Trim off $\frac{5}{8}$ "(1.5cm) from curved lower edge of the collar, being careful to preserve the markings.**

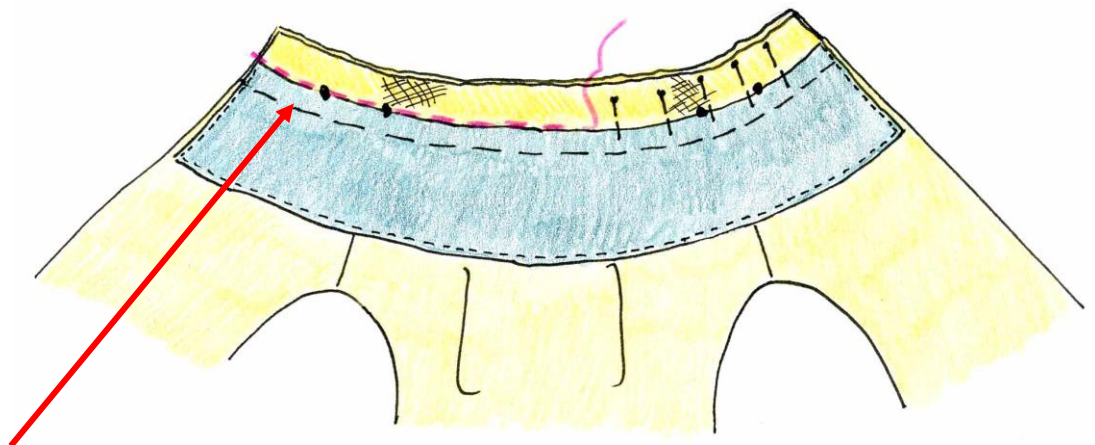
- Pin right side of a second bias strip to lining side of collar, matching edge of binding to trimmed edge of collar.



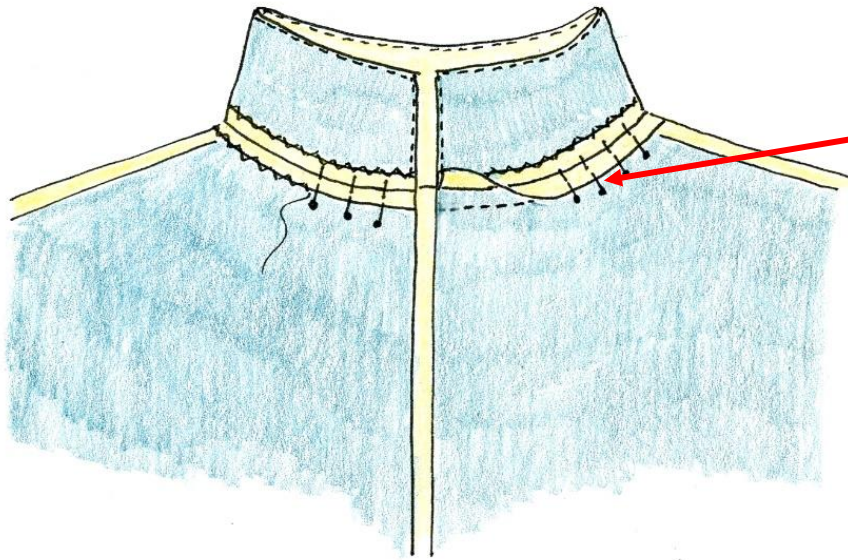
- Stitch $\frac{1}{2}$ "(1.2cm) from trimmed edge. **Press binding away from collar.**

These next steps are a little tricky because the binding strips on the collar and neckline will now function as seam allowances.

- With right sides together, pin the collar and neckline bias binding strips together, making sure the trimmed edge of the collar and the trimmed edge of the neckline are exactly even and the symbols, shoulder seams and center back all match.



- Carefully hand baste the bias bindings together, placing the stitches just next to the trimmed edges of the collar and neckline. Check for accuracy.
- When satisfied with the accuracy of the basting, machine stitch along the basting line, with normal stitches.



- Press the binding seam open and fold each side under $\frac{1}{2}$ " (1.2cm) or less, so that the folded edge just covers the stitching line where each strip of binding was attached. Pin carefully to keep binding from slipping.

- Stitch binding down, using the same decorative stitch that you used on previous seams (see page XIV).

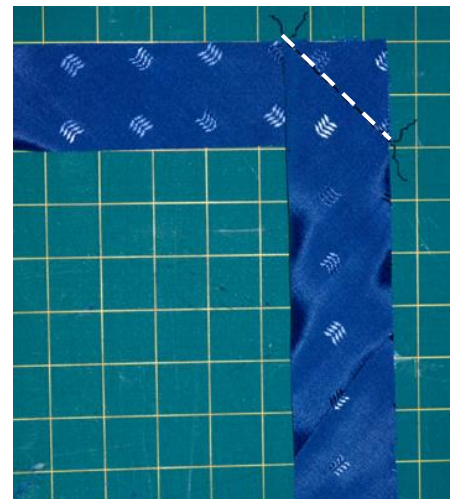
ALL VIEWS BINDING THE OUTER EDGES:

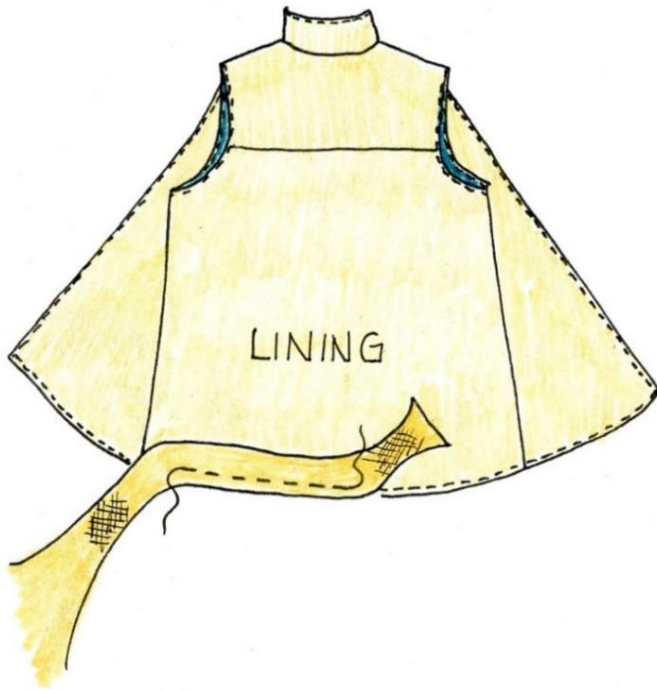


Put Those Edges in a Bind!

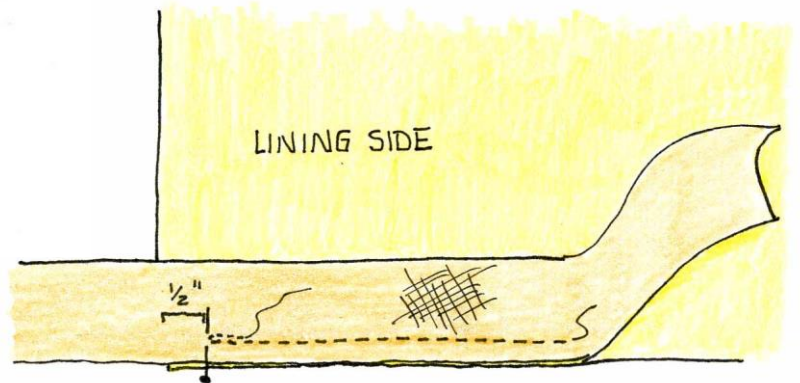
<https://youtu.be/wYixV8SNhHY>

- Pin vest together on all unfinished edges, including armholes.
- Machine baste close to edges [$\frac{1}{8}$ " (3mm) away from cut edge], keeping lining face up under the presser foot.
- Piece bias strips together to create one length long enough to span the perimeter of the jacket.

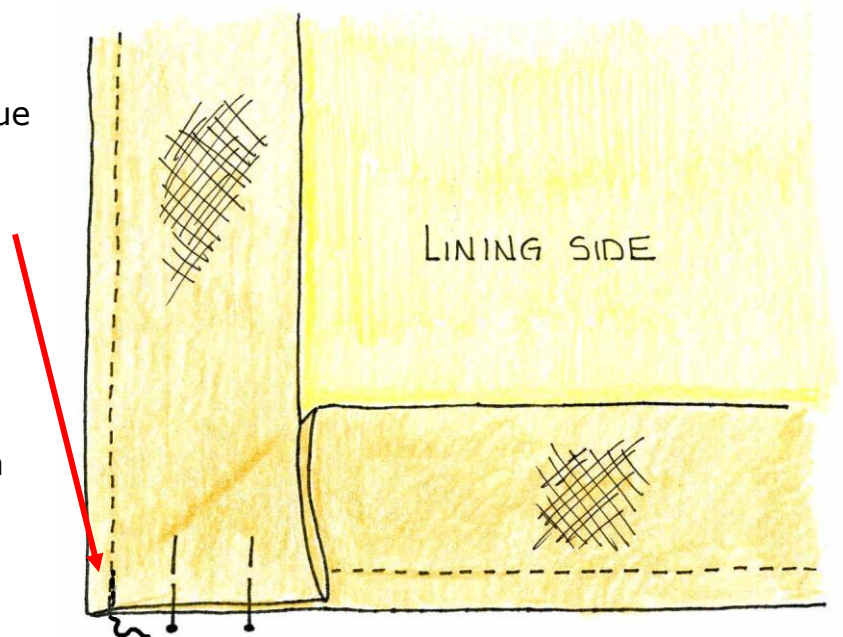




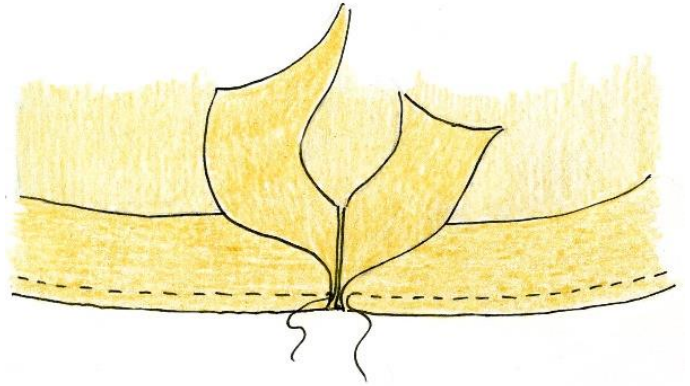
- Starting on the **lining side** of the lower back, and leaving a **4"(10cm) tail of binding**, begin stitching binding to lower edge, $\frac{1}{2}$ "(1.2cm) from cut edge.



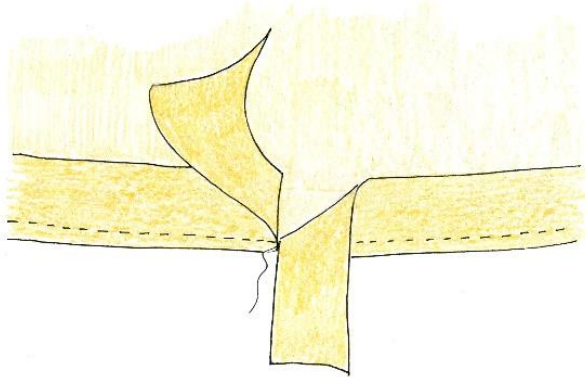
- Stitch to within $\frac{1}{2}$ "(1.2cm) of the front edge. Back stitch and remove the garment from the machine.
- Fold binding up parallel to the front edge, creating an exterior miter and keeping the folded edge even with the lower edge of the garment.
- Begin stitching at the bottom of the front edge, $\frac{1}{2}$ "(1.2cm) seam allowance and backstitch. Continue up the front until the top of the collar, and then create another exterior miter.
- Continue applying the binding across the top of the collar to the other corner, create an exterior miter and continue in this fashion until the bias strip meets the center back where you began.



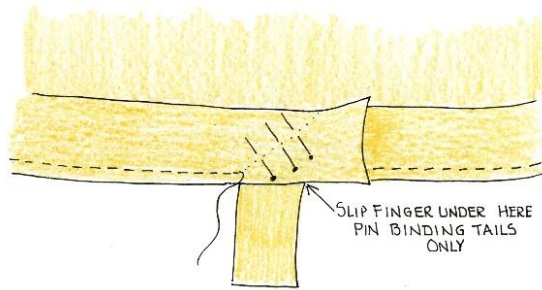
- Butt the bias strips together, leaving a 4"(10cm) tail. DO NOT OVERLAP THE BINDING TAILS!



To join the binding ends:

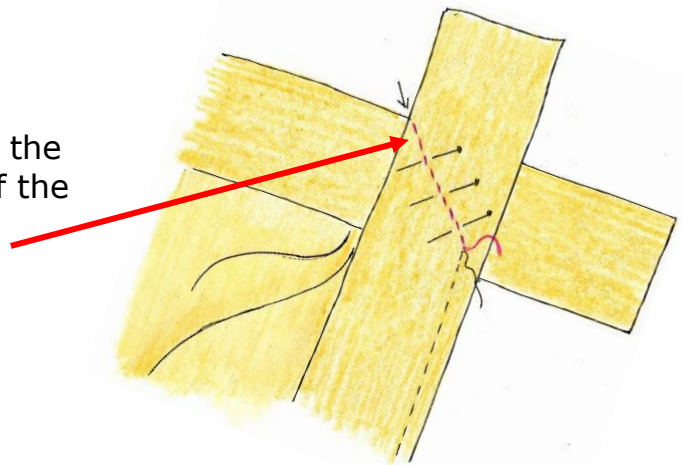


- Turn ending tail of binding down on a 45° angle.

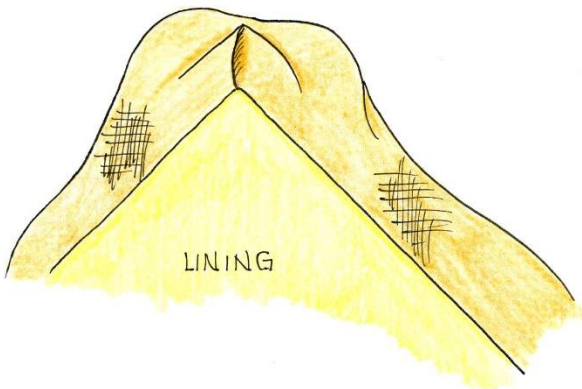


- Overlap beginning tail and slip finger under the two tails. Pin together keeping remaining binding and vest free.

- Open out binding tails and slip them under the machine's presser foot, keeping vest out of the way. Stitch diagonally across the tails, as shown in red.

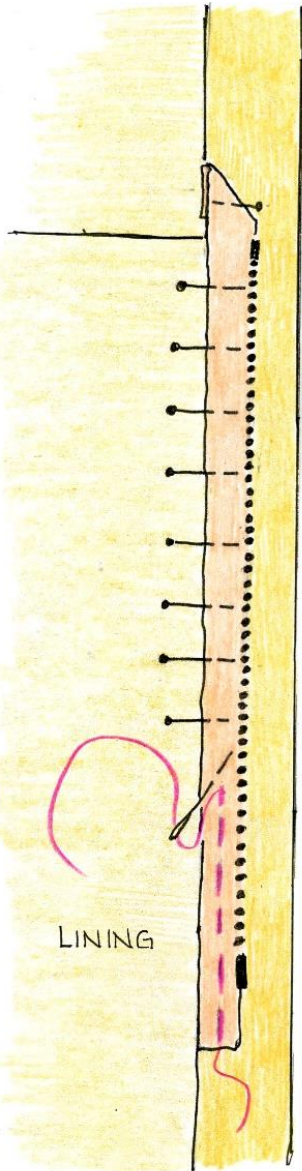


- Trim tails to 1/4"(6mm). Press seam open.



- Press entire binding away from garment. As you press, the binding will automatically fall into miters at the corners of the lining side of the garment.

ALL VIEWS ZIPPER:

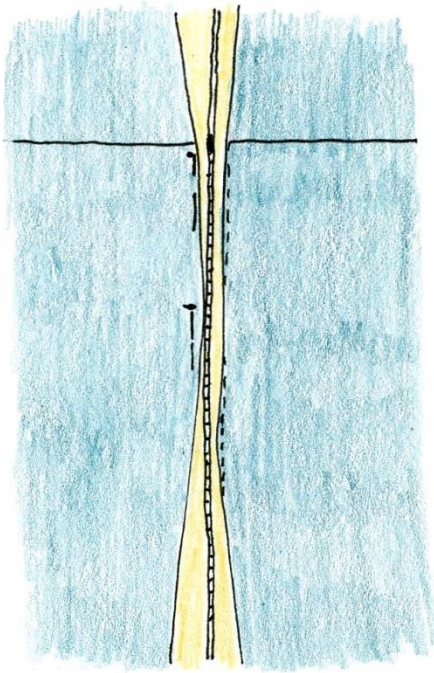


Zipper! Part 2! But these aren't invisible...
<https://youtu.be/1oWdU7FxeDk>

Note: The separating zipper is attached to the center front binding before the binding application is completed. Keep the binding pressed away from the garment while executing the following steps.

Start with the left front. Use a 20" (50cm) or longer #5 separating zipper. Depending on the desired effect, the top of the zipper can be aligned with the bustline or the yoke seam. Determine your placement preference before applying the zipper.

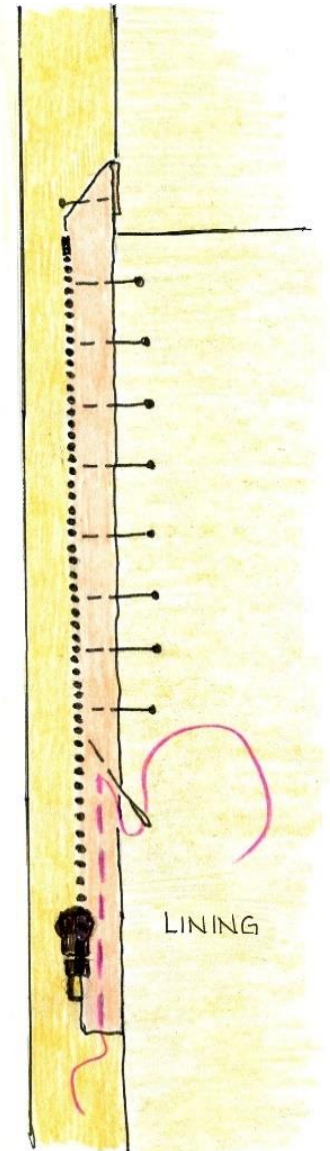
- With the binding extended away from the garment, place the zipper face down on the **lining side** of the **left front** vest. This is a bit of spatial gymnastics. Unzip and remove the half of the zipper with the zipper tab and set it aside.
- Carefully pin the left half of the zipper face down on the **binding as shown**, keeping the binding opened out and away from the garment.
- The edge of the zipper tape should be even with seamline that joins the binding to the vest. The stop at the top of the zipper should be even with yoke seam or bustline.
- Fold under the top of the zipper tape at a 45° angle.
- Hand baste zipper through all layers.
- With a zipper foot, machine stitch $\frac{1}{8}$ " (3mm) from zipper teeth through all layers. Follow guidelines on the zipper tape.
- Stitch again very close to the edge opposite the zipper teeth, making sure to catch the top triangle where zipper is folded at a 45° angle.



- Zip right half of zipper onto the left half. Bring the two fronts of the garment together, center fronts touching, front of vest facing up. Binding strips will be in the way, you won't be able to actually see the zipper. Use this to help position right half of zipper onto the right half of garment, matching bottom edges of vest and optional yoke seams. Feel through for the zipper and place a couple of anchoring pins from the right side to hold right half of zipper into position. Binding will be annoying, just aim for the best placement for the right half of the zipper.

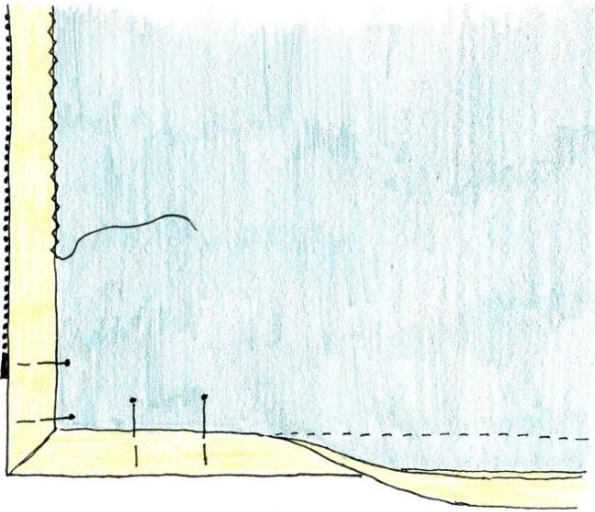
- Carefully unzip zipper, keeping anchor pins in place.

- With wrong side of garment facing out, pin right half of zipper to the binding as with the left half. Edge of the zipper tape should be even with the seamline where the binding was attached. Carefully remove anchor pins once placement is established.
- Fold under the top of the zipper tape at a 45° angle.
- Hand baste zipper through all layers.
- Re-check zipper position by zipping the two halves of the zipper together. Make sure yoke seams and lower edges are even. Unzip zipper.
- With a zipper foot, machine stitch 1/8" (3mm) from zipper teeth through all layers following the guidelines on the zipper tape. Stitch to within 3" (7.5cm) of zipper slider, leave needle in fabric, lift presser foot, and carefully pull zipper slider up past the presser foot. Lower the foot and continue stitching.
- Stitch again very close to the edge opposite the zipper teeth, making sure to catch the top triangle where zipper is folded at a 45° angle.



ALL VIEWS FINISH THE BINDING:

- Starting at or near the center back, turn under binding raw edge $\frac{1}{2}$ "(1.2cm) or less and fold and pin binding in place so the folded edge just covers the stitching line. Finished binding width should be $\frac{1}{2}$ "(1.2cm).



- Form the corners into miters and hold with pins.

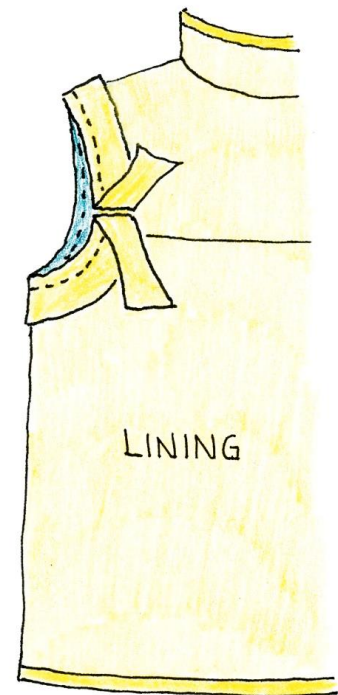
- Working on the outside of the vest, stitch binding in place using whatever stitch you prefer (see page XIV). For **VIEW 2**, use the same stitch you used to secure the binding on the fronts and backs. Pivot carefully at mitered corners.

- **TIP VIEW 1:** It would be helpful to sample first to see what your machine can do. Experiment with a narrow zig-zag, appliqué stitch, straight

stitch, hem stitch, or if desired, by hand with a slip stitch. See examples on page XIV.

ALL VIEWS ARMHOLE BINDING:

- Start with the vest **lining side up**. With right side of binding against lining side of armhole, start in the middle of the armhole back and, leaving a 4"(10cm) tail of binding, stitch binding to armhole, $\frac{1}{2}$ "(1.2cm) from cut edge. Leave a 4"(10cm) binding tail at the end, butting the ends together as shown.
- Follow the directions on page XX to join the binding ends.
- Trim tails to $\frac{1}{4}$ "(6mm). Press joining seam open. Press binding away from garment.
- To finish the binding, wrap it around to the front of the garment, fold binding raw edge under $\frac{1}{2}$ "(1.2cm) or less, so the folded edge falls just over the stitching line.
- Working on the outside of vest, stitch binding in place using whatever stitch you prefer (see page XIV).

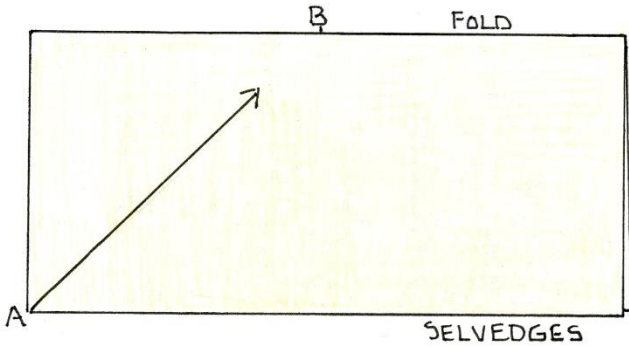


HOW TO CUT BIAS STRIPS:



Creating Bias Strips for Seam and Edge Finishes for Handwoven Fabrics

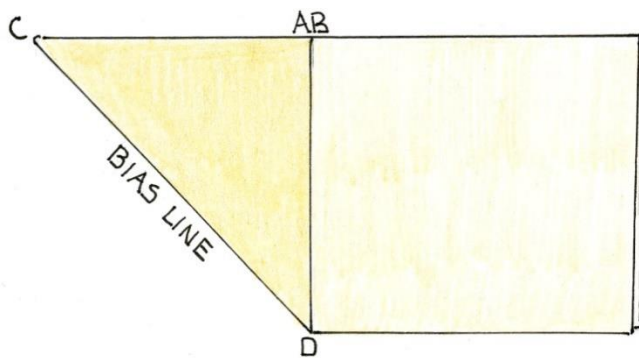
https://youtu.be/XMWwZ_IMWCo



Start with a straightened folded length of lining fabric. $\frac{3}{4}$ yard (68cm) will yield about 10 yards (9.1m) of $2\frac{1}{4}$ " (5.7cm) -wide bias strips.

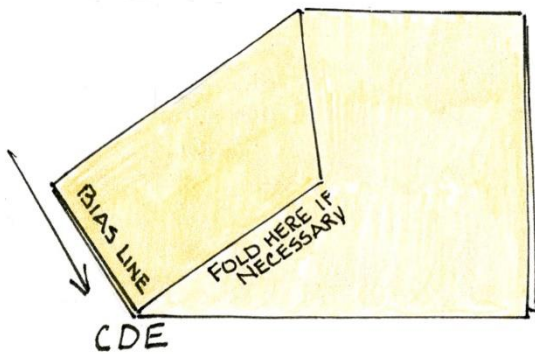
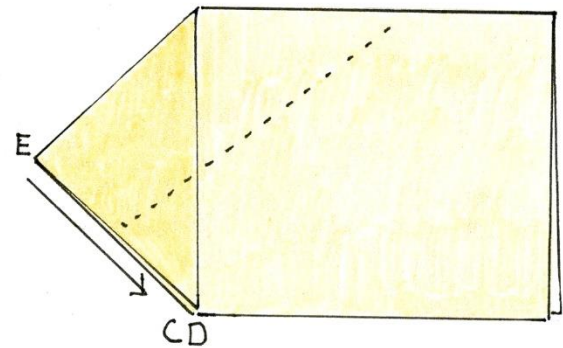
45° angle, which is the true bias.

Bring both layers of corner A to B creating a



Bring corner C to D, folding the bias line in half.

Repeat that fold, bringing E to C and D, folding the bias line in half again.



Fold up any remainder of the fabric if necessary.

Use a rotary cutter and ruler or a pair of scissors to trim off the fold. Working parallel to the trimmed edge, cut $2\frac{1}{4}$ " (5.7cm) -wide bias strips.

