



DARYL LANCASTER

FIBER ARTIST

6 Utne Court
Lincoln Park, NJ 07035
973 628-0185

theweaver@weaversew.com

www.weaversew.com

www.weaversew.com/wordblog



ADVANCED INKLE WEAVING TECHNIQUES

4 Hour Seminar



For those who are looking for the next step with this simple two shaft loom, this is the class for you. Come with a pre-warped inkle loom using a pre-assigned draft and learn 1/1 name draft pick-up, standard 7 thread pick-up, and a supplemental warp technique.



MAXIMUM ENROLLMENT: 15

SKILL LEVEL: Intermediate (must know how to warp and weave a basic band on an inkle loom)

SUPPLY LISTS:

I will need a screen and extension cord with a power strip. I will provide an LCD projector and laptop for digital slides.

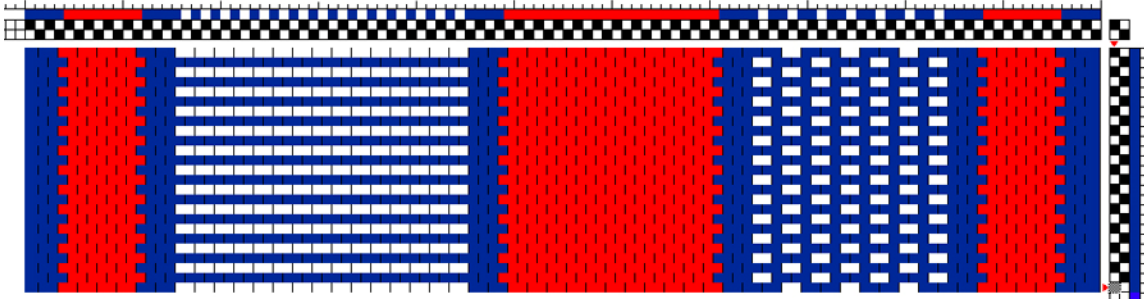
Please provide adequate space for each student to work. In addition, I would like two tables for displaying my own work.

MATERIALS FEE: \$5. for handout

STUDENT MATERIALS LIST:

- o Each student should bring a pre-warped inkle loom, following the provided draft. The size of the yarns is important.

- Scissors
- Belt or Band shuttle (like a stick shuttle but with a knife edge on one long side)
- A small 10" long bungee cord for holding the supplemental warp out of the way.
- Small amounts of your warp threads in case of breakage.
- Extra heddles or heddle thread. (Note: since the warp threads will be fine -10/2 cotton, you may want to consider making finer heddles, 3 cord crochet cotton can work here.)
- A sheet of graph paper and a couple of colored pencils.



There are three yarns in this draft, the colors you pick should be vibrant and high contrast. The “blue” yarn in the above draft should be equivalent to a 10/2 cotton. The “white” yarn in the above draft should be equivalent to a 5/2 cotton and should be in HIGH CONTRAST to the “blue” yarn.

The “blue” yarn will be the shuttle or weft thread as well.

The “red” yarn in the above draft should be a mid value hue, and be equivalent to a 10/2 cotton. The “red” yarn will be the base for the supplemental warp.

For the supplemental warp, please bring a larger grist yarn, this can be something interesting, a fatter knitting yarn, it can be variegated, or decorative. This yarn should be larger in diameter than a 3/2 cotton. Bring a couple of choices. You will need approximately 5 yards of this yarn. We will add it later.

If you are using a Schacht type inkle loom, the length of the warp may be once around the perimeter of the loom, approximately 64”.

If you are using a smaller Ashford Inklette, set up the loom to have at least 60” in warp length.

The finished width of the band, if using the recommended yarns, will be 1 ½”. Please note, this width is pushing the maximum of the smaller Inklette, if you have a larger inkle loom available, you might want to consider using that one for this workshop.

Please start your warp with the first thread on the upper left of the draft. This first warp thread will be over the top peg of the loom and will get a heddle.

It is important to follow the draft exactly and to check it carefully. There must be 15 “white” threads in between the “blue” threads on the left side of the draft, in order to correctly do the name draft. The center “red” section should have enough threads to create a sufficient ground for the supplemental warp which will be added later.

The seven “white” threads in the section on the right, must each sit between two “blue” threads in order to do a seven thread pick up.

Any questions, feel free to email me, Daryl at theweaver@weaversew.com or call 973 628-0185