

DARYL LANCASTER

FIBER ARTIST

6 Utne Court
Lincoln Park, NJ 07035
973 628-0185

theweaver@weaversew.com

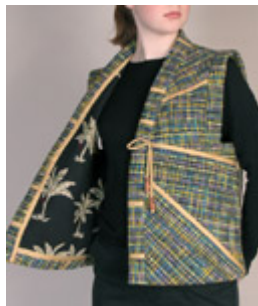
www.weaversew.com

www.weaversew.com/wordblog



3 Day Workshop

VESTED INTEREST



We all have drawers and boxes of bits of treasured fabrics, handwoven, felted, antique, samplers, and quilt fabrics. Some are scraps from other projects, some are samples from workshops. Some are finished projects that didn't work or don't fit anymore. And then there are all the scarves and placemats... This is a workshop on taking what you don't know what to do with, and learning to piece it all together to make a wonderful lined vest, custom fitted to you. Fitting, garment construction, and piecing techniques for all types of fabric will be covered. Anything goes here, it's a chance to get really carried away since all you have

to lose are a few scraps!

The class will include basic fitting and sewing techniques.



Pieced vest from felt scraps.
Felt by Pirooska Toth

ALL LEVELS ARE WELCOME

Daryl Lancaster, a hand-weaver and fiber artist known for her hand-woven, pieced garments, has been sewing for more than 40 years. She gives lectures and workshops to guilds, conferences, and craft centers all over the United States. The former Features Editor for Handwoven Magazine, she frequently contributes to various weaving publications.

MAXIMUM ENROLLMENT: 15

SUPPLY LISTS:

a. Each student including myself will need a large (at least 60" wide) table and chair (two students could share a **large** cafeteria type table). A few extra tables would be helpful for samples, storyboards, etc. if there is room. An electrical outlet will be necessary for each student, myself, and for 6-8 irons. (One for every two students) There needs to be adequate power as each iron could draw 1500 watts. If possible, irons should be sturdy, heavy, steam types, which do not automatically shut off. A full-length mirror and garment rack for hanging samples will be needed. Also, please provide an electric or battery operated pencil sharpener. The room should be large enough for students to comfortably move around. A sewing machine should be made available for any student who can't bring one to class due to travel restrictions. A digital slide presentation will be given, I provide the projector, but I will need a wall or screen for viewing and an extension cord and power strip.

b. Students should bring:

- A CARDBOARD CUTTING BOARD WITH PRINTED GRID Usually available from www.joann.com **Wrights Cardboard Pattern Cutting Board-36"X60"**, about \$15.00, (If one is not available, a large piece of corrugated cardboard can work, ideally 36" x 60".)
- A SMALL ROTARY CUTTING BOARD AND ROTARY CUTTER (OPTIONAL)
- 2 OR 3 GOOD QUALITY COLORED PENCILS (eg. Sanford Prismacolor)
- PUSH PINS
- SEE-THRU 18" STRAIGHT EDGE RULER
- TAPE MEASURE
- PORTABLE SEWING MACHINE PREFERABLY WITH INSTRUCTION MANUAL, EXTRA NEEDLES (size 14), AND BOBBINS. TRY TO BECOME FAMILIAR WITH ITS OPERATION (especially if you are borrowing one) AND OIL IT IF YOU HAVEN'T IN A LONG TIME! (A zig zag sewing machine with a few decorative stitches is really helpful for this project. Straight stitch machines don't have any options for decorative finishes. Optional: If you have a walking/dual feed foot, please bring it. Also, if you have a free motion embroidery foot, bring that as well. If you don't know what these are, don't worry about it.)
- (optional) IF YOU ARE A FELTER, BRINGING FELT SCRAPS, AND HAVE ACCESS TO A NEEDLE FELTING MACHINE, LIKE THE JANOME EXPRESSIONS, PLEASE FEEL FREE TO BRING IT ALONG, OTHERWISE, A NEEDLE FELTING TOOL WITH FOAM BASE OR THE CLOVER FELTING TOOL AND BRUSH ARE QUITE USEFUL.
- EXTENSION CORD AND POWER STRIP
- 6" SEAM GAUGE (THE KIND WITH THE SLIDING MARKER)
- THREAD (USE LONG STAPLE POLYESTER LIKE GUTTERMAN)
- RAYON EMBROIDERY THREADS OR METALLICS (OPTIONAL)
- BALL HEADED QUILTERS PINS
- GOOD SCISSORS OR DRESSMAKERS SHEARS
- EMBROIDERY SCISSORS
- NOTEBOOK AND PEN (a highlighter really helps)
- PRESS CLOTH (Old, man's handkerchief works great, so does baking parchment)
- IRONING BLANKET OR LARGE BATH TOWEL
- LOTS OF SCRAPS, OLD WORK YOU CAN CUT UP, SCARVES, ANYTHING TEXTILE! HANDWOVENS, FELTED FABRICS, QUILT FABRICS, ANTIQUE TEXTILES, OLD CLOTHING THAT MEANS SOMETHING TO YOU, WORKSHOP SAMPLERS, FEEL FREE TO MIX FABRICS, CLEAN OUT YOUR FABRIC BINS, EVERYTHING HAS A STORY! (Please avoid upholstery samples with the rubber backing)
- BRING A YARD OF LINING OR TRIM FABRIC. PIECING TECHNIQUES ON WOVEN FABRIC REQUIRE BIAS TRIM. I KNOW IT IS HARD TO KNOW WHAT TRIM FABRIC TO BRING, THROW IN WHATEVER YOU CAN CARRY. OFTEN WHAT WORKS BEST ISN'T WHAT YOU ORIGINALLY THOUGHT!
- BRING TWO YARDS OF LINING TO LINE THE VEST. (Lining fabrics and quilt cottons can work for this purpose) THIS FABRIC CAN BE DIFFERENT THAN THE ONE USED FOR THE TRIM. PRESHRINK BOTH FABRICS IN HOT WATER BEFORE CLASS. (Place in hot tap water for about 20 minutes, roll in towel, hang to dry.)

MATERIALS FEE: \$25.00 INCLUDES INTERFACING, PATTERN PAPER AND HANDOUT