

1800 JACKET

Lined jacket with yoke, this jacket has a horizontal bust dart and vertical waist darts. The patch pockets have a decorative button detail.

The jacket is lined edge to edge and the entire perimeter is bound with 2 ¼" (5.7cm) -wide bias strips. Jacket has a stand-up collar and center front separating zipper.

NOTE: The fabric for this jacket should be stable; if made from handwoven fabric it is advisable to use a fusible underlining.



This jacket has a horizontal bust dart and vertical waist darts.

Size	Finished Bust Circumference	Finished lower width	Finished Length
Brown	36 5/8" (93cm)	39 1/2" (100.3cm)	24 1/8" (61.2cm)
Green	39 3/8" (100cm)	42 1/8" (107cm)	24 3/4" (62.8cm)
Red	42 1/8" (107cm)	45" (114.3cm)	25 3/8" (64.4cm)
Blue	44 3/4" (113.6cm)	47 3/4" (121.2cm)	26 1/8" (66.3cm)
Orange	47 1/4" (120cm)	50 1/2" (128.2cm)	26 3/4" (67.9cm)
Purple	49 3/4" (126.3cm)	53" (134.6cm)	27 3/8" (69.5cm)

Yardage requirements:

Yardage requirements assume that you are using a one-way design, so that all the pattern pieces will be cut in the same direction. However, handwoven fabric can often be cut in both directions so that pattern pieces can nest close to each other, which requires less fabric. Matching weft patterning and hand-painted warps will require more fabric.

	18"(46cm)	24"(61cm)	36"(92cm)	45"(115cm)	60"(150cm)
Brown	5 ½ yds (5m)	3 ½ yds (3.1m)	2 ¾ yds (2.5m)	2 ½ yds (2.2m)	1 ½ yds (1.3m)
Green	5 ½ (5m)	4 ¼(3.8m)	2 ¾(2.5m)	2 ½(2.2m)	1 ¾ (1.5m)
Red	5 ½ (5m)	4 ¾(4.3m)	2 ¾(2.5m)	2 ½(2.2m)	1 ¾ (1.5m)
Blue	5 ¾ (5.2m)	5 (4.5m)	3 (2.7m)	2 ½(2.2m)	1 ¾ (1.5m)
Orange	NA	5 (4.5m)	3 ¼(2.9m)	2 ½(2.2m)	1 ¾ (1.5m)
Purple	NA	5 (4.5m)	3 ½(3.2m)	2 ¾(2.5m)	1 ¾ (1.5m)

- Lining fabric: Use something with body. Follow the yardage chart above to determine how much 45"(115cm) -wide fabric you will need for your size jacket. Be sure to preshrink your lining fabric.
- Contrast for bias trim, collar lining and pocket lining: Choose a fabric with body, such as linen or lightweight corduroy. 1 yard (92cm), 45"(115cm) -wide fabric
- Fusible knit interfacing: ½ yard(45.7cm), 20"(50.8cm) -wide
<https://www.weaversew.com/shop/htcw-fusi-knit-interfacing.html>

NOTE: The fabric for this jacket should be stable; if made from handwoven fabric it is advisable to use a fusible underlining. Apply to the wrong side of each garment section to add stability. <https://www.weaversew.com/shop/texturized-poly-weft.html>

- #5 20-22"(50-55cm) separating zipper
- ½ yard (46cm) ¼"(6mm) twill tape or stay tape.
- Two ¾"(2cm) buttons for the pockets. Note: these are for decoration only.

Recommendations For Handwoven Fabric

My recommendations are to sett your fabric much denser than you would think. Try 8/2 Tencel at 36epi, 10/2 perle cotton at 30, 5/2 at 20, etc. It will ultimately depend on the structure, and your beat and the loom. I have seen fabrics in just about every fiber and combination of fibers you can imagine. Note: The fabric cannot be too thick, because it gets tough fitting multiple layers through the sewing machine. Any fiber works, if you can weave it, but I find woven cloth for garments will have the best results if at least part of the fabric is a protein content, like wool, which can be fullled up to create a denser, more stable fabric.

Sampling can be advantageous here. I have had students produce wonderful fabrics with a cotton or Tencel warp and Jagerspun's Zephyr wool/silk weft, which can be fullled up well for a stable, dense but pliable fabric, great for a jacket or vest. The fabric for this jacket should be really stable since it is lined to the edge and bound off with bias strips. Note: A knit interfacing can be fused on the back for more stability if desired. <https://www.weaversew.com/shop/htcw-fusi-knit-interfacing.html> or <https://www.weaversew.com/shop/texturized-poly-weft.html>

Start with commercial fabric if you are intimidated. Commercial fabric can give you an idea of what weights work for this silhouette. Here are some of my basic suggestions when working with handwoven cloth:

- Sett it denser than you think.

- Avoid long floats, which make a fabric less stable.
- If you want a lighter fabric, choose a thinner yarn, not a looser sett.
- Avoid weft patterning, repeats and blocks. They are hard to match for side seams and such.
- **If you use a hand-painted warp, make sure there is a repeat!**
- Wash it well.

Finishing is important. **ALL FABRICS SHOULD BE WASHED PRIOR TO SEWING!**

The exception here would be fabrics that were processed, dyed, felted, steamed, etc. They would already be preshrunk. If using handwoven fabric, or something commercial that has not been in contact with moisture, steam, water, or whatever, please machine wash your completed fabric **AT A MINIMUM** on **GENTLE CYCLE** for 3 minutes in **COLD OR WARM WATER** using a laundry detergent. This is even suitable for wool and mohair. Fabric may be hung to dry or machine dried if the fabric warrants this type of processing. Test, Test, Test! When fabric is completely dry, it should be steam pressed. You could even have the dry cleaner press it if your iron is inadequate.

Digital monographs for sewing handwovens, seam finishes, edge finishes and closures are available for purchase from my website.

<https://www.weaversew.com/shop/digital-monographs.html>

NOTES FOR CUSTOMIZING THE PATTERN FOR YOUR BODY:

- **Test the Pattern first.**
- There is a "Y" line for lengthening and shortening on each of the yoke pattern pieces and the sleeve. Shortening here will raise the dart and the armhole. The same amount must also be removed from the sleeve's armscye circumference. Take the same amount from the sleeve's armscye as a tuck: use the "Y" line guides, starting at the seamline and tapering to nothing where the lines converge. Lengthening or shortening can also be done at the lower edge.
- **There is a generous amount between my sizes, so consider cutting between two sizes for a more custom fit.**
- For fuller hips, consider combining sizes, for example – green for the upper body transitioning to the larger red size for the lower body.

For more information on basic pattern alterations, please download the free PDF tutorial from my website

<https://www.daryllancaster.com/Webfiles/BasicPatternAlterations.pdf>

Jacket Directions

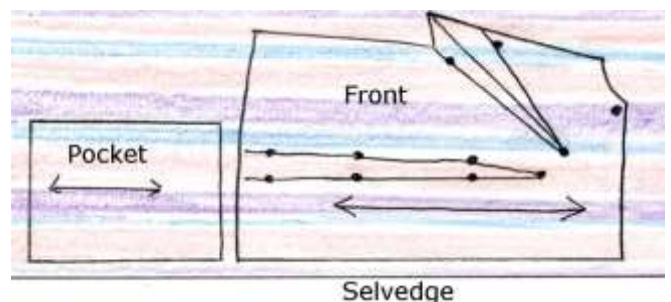
Handwoven fabrics are typically 18" (46cm) or 24" (61cm) -wide. Since the pattern was drafted with the center back placed on a fold, you will need to make an adjustment for these narrow fabrics. To do this, add a $\frac{5}{8}$ " (1.5cm) seam allowance to the center back. When you cut out your jacket, align this new center back cutting line with the selvedge so the seam will automatically have a clean finish.

- Roll out needle-ready fabric right side up
- Cut singly
- Check grainlines
- Don't forget to flip pattern pieces

CUTTING DIRECTIONS:

FROM HANDWOVEN FABRIC, cut singly:

- **1 LOWER BACK:** To cut a full back, pin pattern in place and cut one half up to center back line. Unpin and carefully flip at center back line, keeping the lower edges aligned; repin pattern piece and finish cutting out BACK. If fabric is too narrow for a full back, add $\frac{5}{8}$ "(1.5cm) seam allowance to center back edge before cutting and cut 2 backs. Use selvedge edge, if appropriate, so there will be no need to finish the center back seam.
- **1 BACK YOKE:** pin pattern in place and cut one half up to center back line. Unpin and carefully flip at center back line, keeping the lower edges aligned; repin pattern piece and finish cutting out yoke. **Tip: Consider cutting the yoke on the crosswise grain.**
- **2 LOWER FRONTS:** Cut one and flip for the second.
- **2 FRONT YOKES:** Cut one and flip for the second. **Tip: Consider cutting the yoke on the crosswise grain.**
- **2 POCKETS:** Cut one and flip for the second. **(To match pockets to the front, place each pocket directly below its corresponding front pattern section, placing the front cutting line of the pocket on the same warp thread as the front cutting line of the corresponding front pattern section.**
- **1 COLLAR:** Pin pattern in place and cut one half up to center back line. Unpin and carefully flip at center back line, keeping the lower edges aligned; repin pattern piece and finish cutting out collar.
- **2 SLEEVES:** Cut one and flip for the second.



USE TAILOR'S TACKS TO TRANSFER ALL DOTS AND MARKINGS.

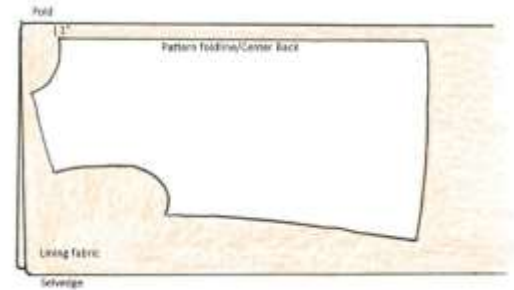


FROM FUSIBLE INTERFACING, cut:

- **2 POCKETS** (Use the full pattern piece)
- **1 COLLAR** on the fold

FROM LINING, cut:

- **1 BACK** Pin the back yoke to the lower back pattern piece along the yoke seamline and cut back on fold. **Note: Place center fold line 1"(2.5cm) from the fold of the lining to create a center back pleat.**
- **2 FRONTS** Pin the front yoke to the lower front pattern piece along the yoke seamline and cut 2 fronts.
- **1 COLLAR** on the fold
- **2 POCKETS**
- **2 SLEEVES** **NOTE: Add ½"(1.2cm) to the bottom of each sleeve lining for ease.**
- ABOUT 6-8 yards (5.5 – 7.3m) of 2 ¼" (5.7cm) -wide **BIAS STRIPS** for edge binding. See page XVI for a tutorial on cutting bias.

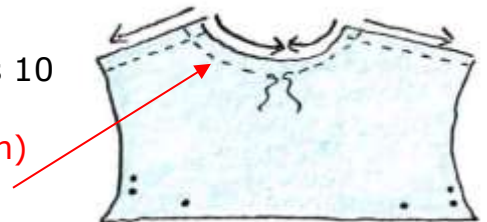


USE PENCIL, DRESSMAKER'S CARBON, CHALK OR DISAPPEARING MARKER TO TRANSFER ALL MARKINGS TO LINING.

ASSEMBLING THE JACKET

BACK YOKE:

- Recommended machine stitch length for handwovens is 10 stitches per inch (2.5cm).
- Staystitch back neck and shoulder seamlines: ½"(1.3cm) from cut edge, regular stitches, **follow arrows.**



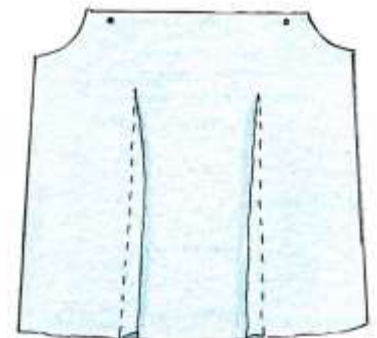
NOTE: Directional stitching means to stitch in the direction of the fabric grain. Doing this helps keep the fabric from stretching and minimizes any distortion. The arrows on the illustrations indicate the direction to stitch for both staystitching and seam construction.

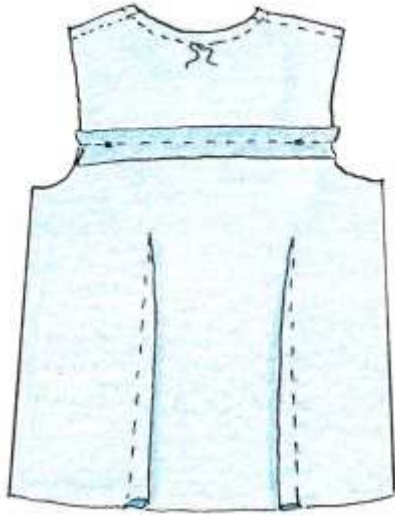
For a more in-depth discussion of **Staystitching** and **Directional Stitching**, please watch my video at <https://www.threadsmagazine.com/2019/08/23/staystitching-basics-video>

- **REPEAT STAYSTITCHING FOR LINING**

BACK YOKE:

- Sew waist darts, matching dots. Press flat, then towards center.
- If a center back seam was added, stitch center back seam using a ⅝"(1.5cm) seam allowance. Press open.

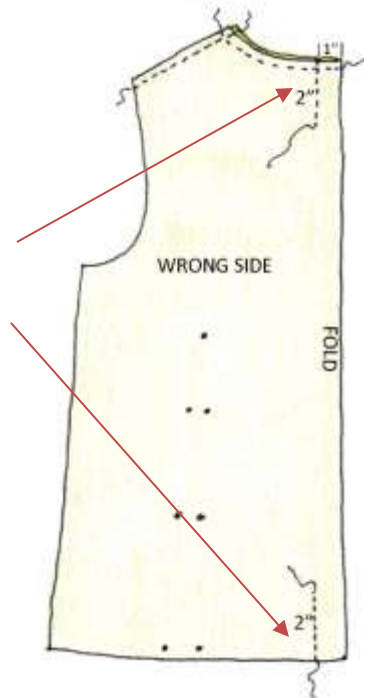




- With right sides together, pin back yoke to lower back matching dots, stitch seam with a $\frac{5}{8}$ " (1.5cm) seam allowance. Press open.

- To make the pleat in the back lining, make a mark 1" (2.5cm) from the center fold. Stitch down 2" (5cm) from the neckline and 2" (5cm) up from the lower edge.

- Press the pleat in the back lining to one side, towards the right back. Machine baste across the back neck and lower edge to hold the pleat in place.



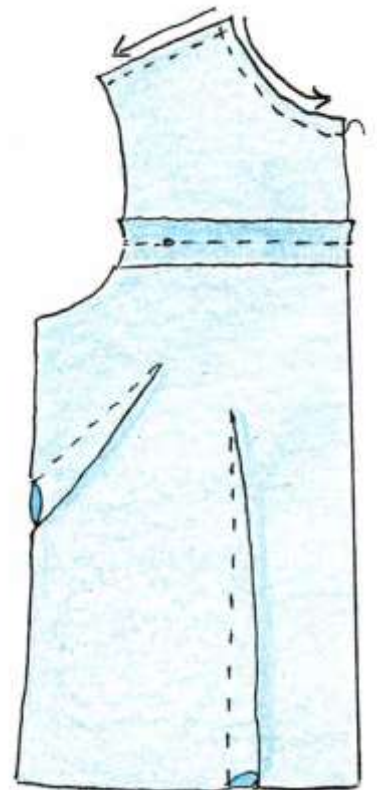
- REPEAT WAIST DARTS FOR LINING.

FRONT YOKES:

- Staystitch front neck and shoulder seamlines. (Follow arrows)
- REPEAT STAYSTITCHING FOR LINING.

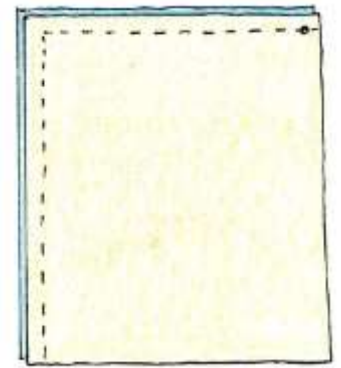
LOWER FRONTS:

- Sew bust darts, matching dots. Press flat, then down. Sew waist darts, matching dots. Press flat, then towards center.
- REPEAT BUST AND WAIST DARTS FOR LINING.
- With right sides together, pin front yokes to lower fronts matching dots. Stitch seams with a $\frac{5}{8}$ " (1.5cm) seam allowance. Press open

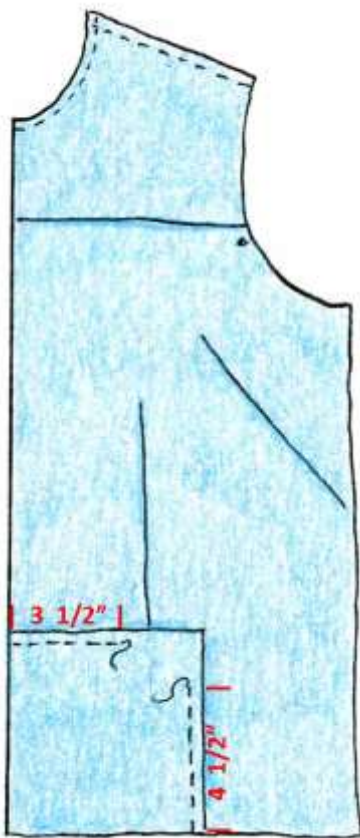


POCKETS:

- Place interfacing on the wrong side of each pocket. **Steam shrink** interfacing by hovering over the surface with a steam iron, then fuse it to wrong side of each pocket using a press cloth. I recommend silk organza as a press cloth. (Don't lose the mark indicating center front.)
- With right sides together, stitch lining to upper edge and side edge of pocket. [$\frac{5}{8}$ "(1.5cm) seam allowance]. **LEAVE OPEN FRONT AND LOWER EDGE.**



- Grade seam by trimming the lining seam allowance to $\frac{1}{4}$ "(6mm) and the handwoven to $\frac{3}{8}$ "(1cm). Clip corner to reduce bulk.

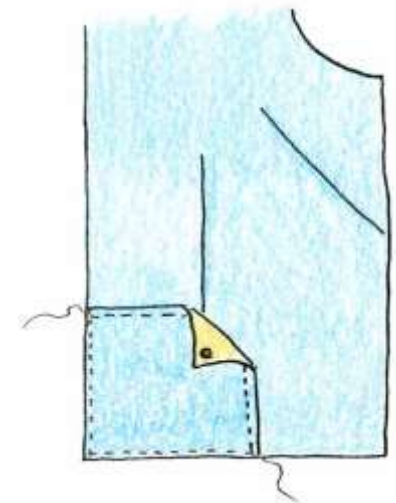


- Turn pocket right side out using point turner at corner. Press.
- Pin pocket to corresponding front with center front and lower edges matching.



- Starting at the front edge, with slightly longer stitch length, stitch pocket across top edge for $3\frac{1}{2}$ "(8.9cm). Backstitch or pull tails through to the back and tie off securely.
- Starting at the lower edge, with slightly longer stitch length, stitch along pocket side edge for $4\frac{1}{2}$ "(11.4cm). Backstitch or pull tails through to the back and tie off securely.

- Fold upper corner of pocket down to form a decorative triangle. Press. Sew a decorative button through the two pocket layers to hold the corner in place.
- Machine-baste center front of pocket to center front of garment, $\frac{1}{4}$ "(6mm) from cutting line. Continue basting across the bottom edge, $\frac{1}{4}$ "(6mm) from cutting line.



SHOULDER AND SIDE SEAMS:

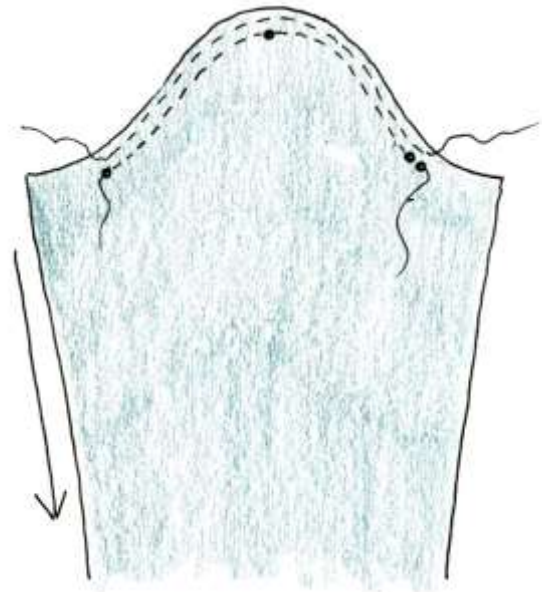
- With right sides together, match and pin **shoulder seamlines**.
- Stitch fronts to back at shoulders, **adding twill tape** (which will stabilize the shoulder seams) along the $\frac{5}{8}$ "(1.5cm) seamline and stitching in the direction of the arrows. **Note: If you follow the direction of the arrows, the twill tape will be applied to the front on the right shoulder and to the back on the left shoulder.**

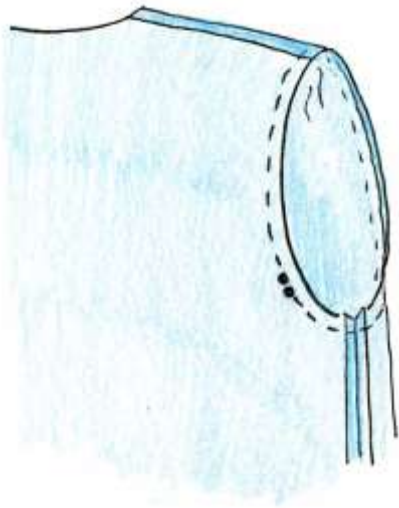


- With right sides together, stitch side seams in direction of arrows, from hem to underarm [$\frac{5}{8}$ "(1.5cm) seam allowance].
- Press seams open.
- **Repeat for lining: right sides together, pin the shoulder and side seam allowances and stitch a $\frac{5}{8}$ "(1.5cm) seam following the arrows.**

SLEEVES:

- Using **long machine basting stitches**, ease stitch from dot to double dots, across cap, placing one row of stitching on the seamline and a parallel second row of stitching between the seamline and the cut edge. **DO NOT BACKSTITCH!** Leave long tails.
- With right sides together, stitch sleeve underarm seams. [$\frac{5}{8}$ "(1.5cm) seam allowance]. Press seams open.
- **Repeat for lining.**





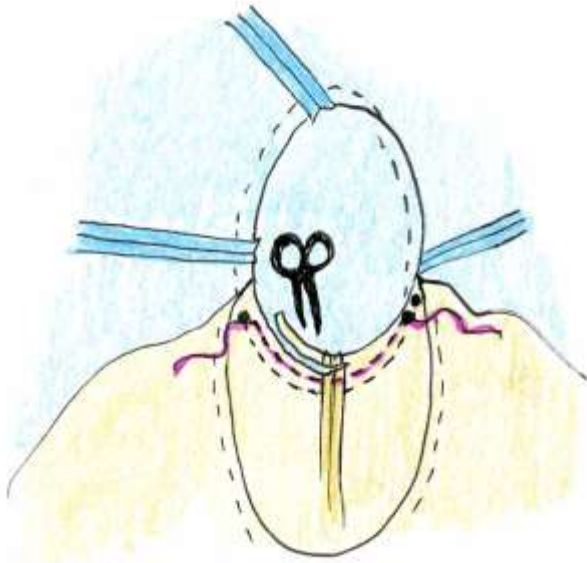
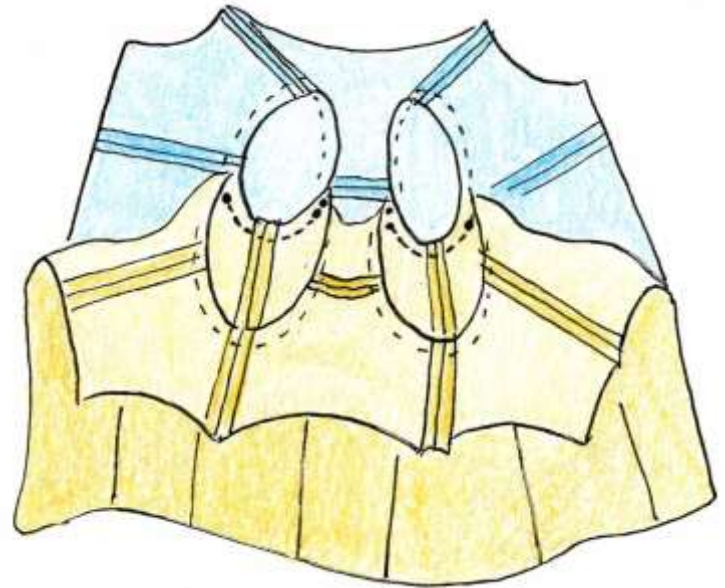
- Insert sleeve into garment, match and pin shoulder dot of sleeve to shoulder seamline of jacket. Match and pin additional dots and underarm seams. Double dots indicate the back of the armhole. Ease fullness of cap of sleeve by pulling on the tails of the ease stitching, distributing the fullness evenly across top 4"(10cm) of sleeve cap.

- Machine-baste sleeves into place. Check fit.
- Stitch sleeves into place.
- From the right side of the garment, gently steam sleeve seam allowances towards sleeve, using a tailor's ham or rolled towel to shape cap of sleeve.

- Repeat for lining.

YOU SHOULD NOW HAVE TWO JACKET SHELLS, ONE FROM HANDWOVEN AND ONE FROM LINING FABRIC!

- Attach the two shells together under the arm: with wrongs sides together, pin underarms of both handwoven and lining shell together, matching dots and underarm seams, keeping both sleeves out of the way.

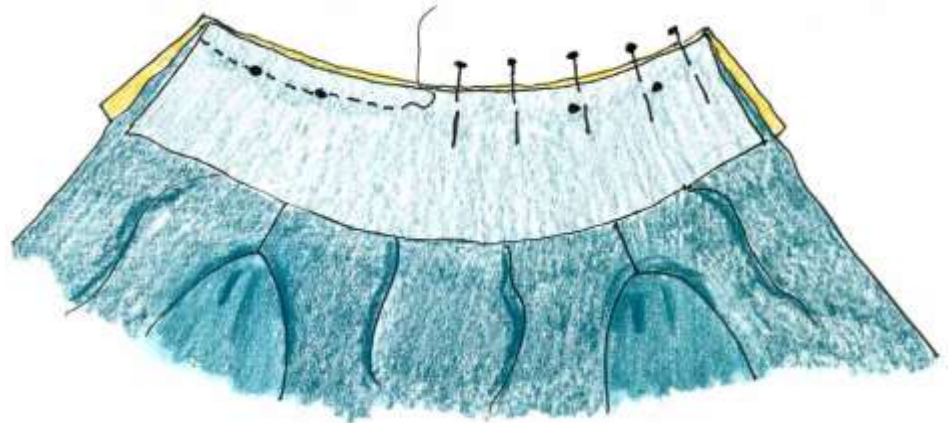
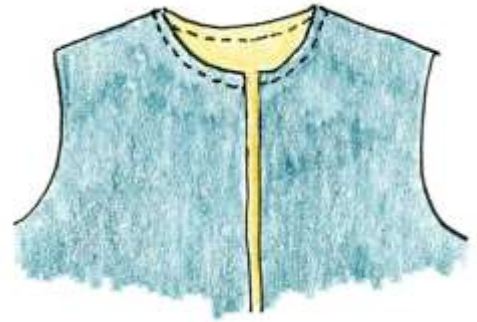


- Machine stitch 1/4"(6mm) from original stitching line from single dot, through the underarm seam, to double dot.

- Carefully trim away 1/4"(6mm) of both seam allowances from single dot, through the underarm seam, to double dot ONLY!

COLLAR:

- Pin jacket to lining at neck edge. Machine-baste to hold edges together.
- Place interfacing on the wrong side of the collar facing. **Steam shrink** interfacing by hovering over the surface with a steam iron, then fuse it to wrong side of the collar facing using a press cloth. I recommend silk organza as a press cloth. Make sure markings are still visible.
- With right sides together, pin collar facing to lining shell, matching marked edge of collar lining to neck edge of lining shell. Match symbols and clip neckline seam allowance where necessary for a smooth fit.
- With right sides together, pin collar to jacket shell, matching marked edge of collar to neck edge of jacket shell.



NOTE: Neckline should be sandwiched between the two collars.

- Stitch through all layers, stitching on the $\frac{5}{8}$ "(1.5cm) seamline.
- Grade seam allowances to reduce bulk: trim collar and collar facing to $\frac{1}{4}$ "(6mm) and neckline to $\frac{3}{8}$ "(1cm).
- Steam collar and collar facing away from jacket.
- Pin jacket together along all edges including lower edges of sleeves. Although lining will be slightly longer, keep the cut edges together as this will allow ease if the outer sleeve grows.
- With the lining against the presser foot, baste close to edges [$\frac{1}{8}$ "(3mm) away from cut edge].

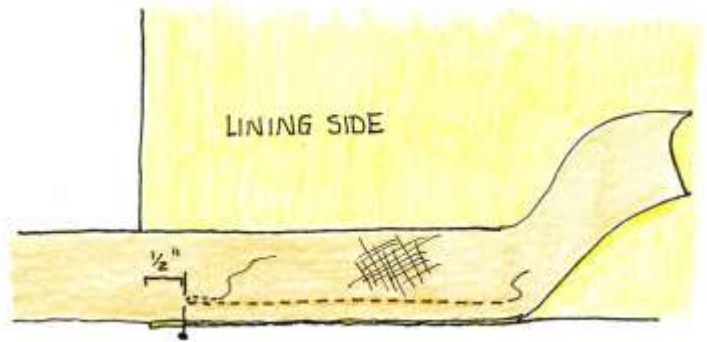
BINDING THE OUTER EDGES:

- Piece bias strips together to create one length of binding long enough to span the outer edges of the jacket.



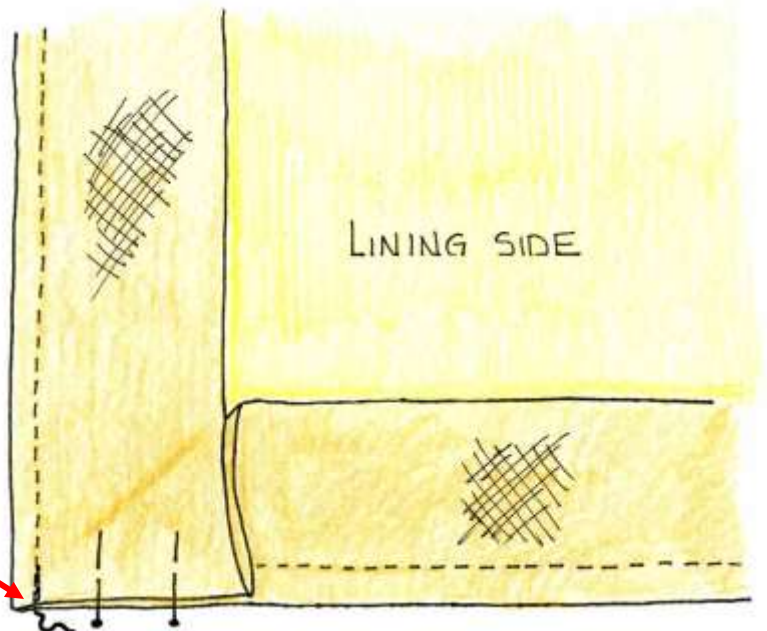
- Starting on the **lining side** of the lower back, leaving a **4"(10cm) tail of bias**, begin stitching bias binding to lower edge, $\frac{1}{2}$ "(1.2cm) from cut edge.

- Stitch to within $\frac{1}{2}$ "(1.2cm) of the front edge. Back stitch and remove the garment from the machine.

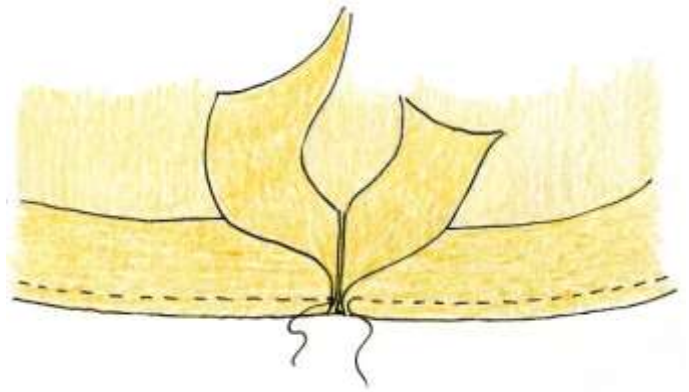


- Fold binding up parallel to the front edge, creating an exterior miter, keeping the folded edge even with the lower edge of the garment.

- Begin stitching at the bottom of the lower front edge [$\frac{1}{2}$ "(1.2cm) center front seam allowance] and backstitch. Continue up the front to within a $\frac{1}{2}$ "(1.2cm) of the top of the collar and create another exterior miter.

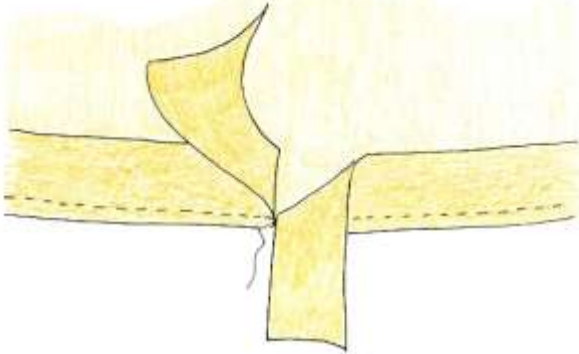


- Continue applying the binding across the top of the collar to the other corner, create a miter and continue in this fashion until the bias strip meets the center back where you began.
- Butt the bias strips together leaving a 4"(10cm) tail. DO NOT OVERLAP THE BINDING TAILS!

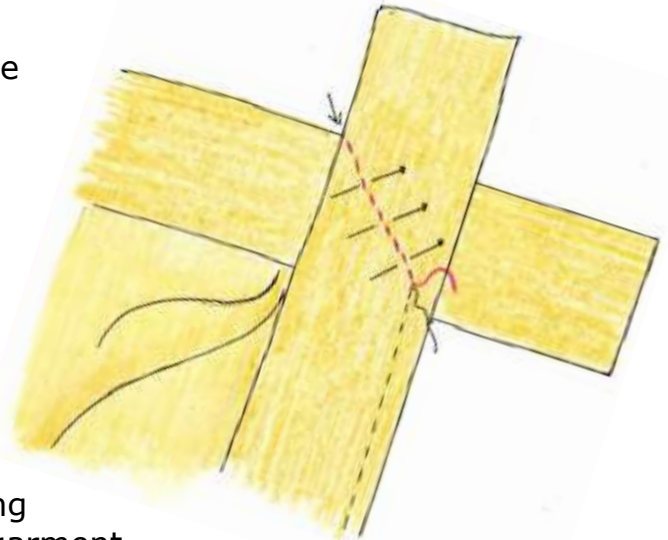
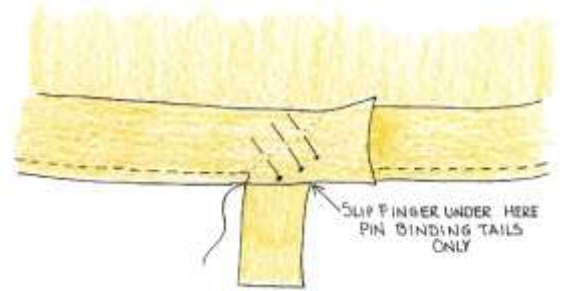


To join the binding ends:

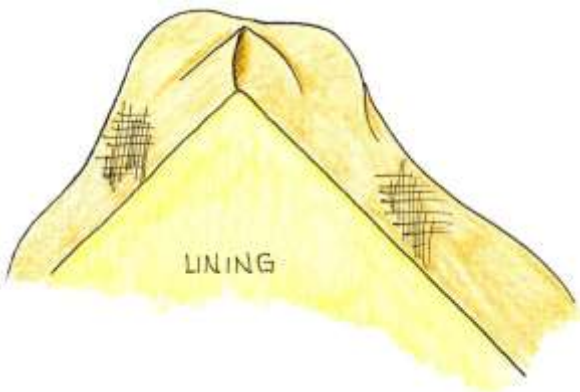
- Turn ending tail of binding down on a 45° angle.



- Overlap beginning tail and slip finger under the two tails. Pin together keeping remaining binding and jacket free.
- Open out binding tails and slip them under the machine's presser foot, keeping jacket out of the way. Stitch diagonally across the tails as shown in red.
- Trim tails to ¼"(6mm). Press seam open.



- Press entire binding away from garment. As you press, the binding will automatically form into a miter on the corners of the lining side of the garment.

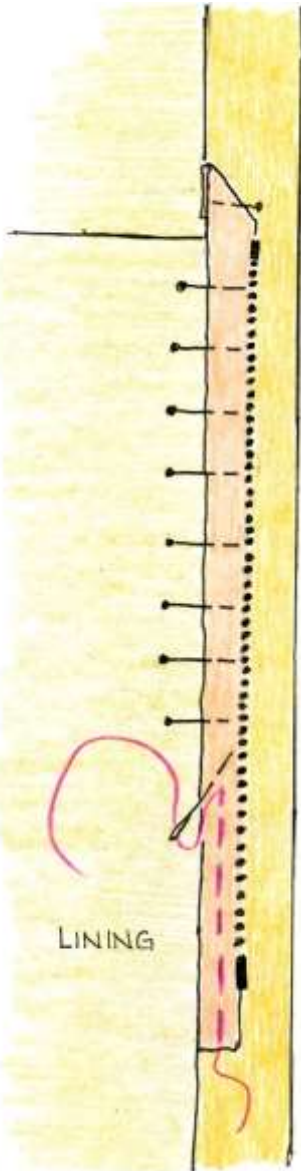


- In the same manner, apply the binding to the bottom edge of the lining side of the sleeve.

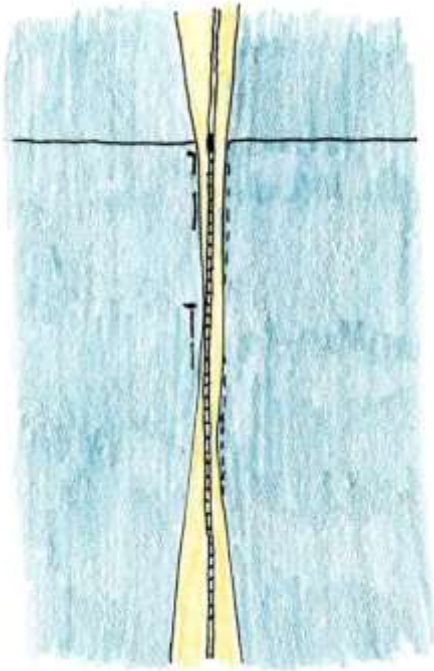
ZIPPER:

Note: The separating zipper is attached to the center front binding before the binding application is completed. Keep the binding pressed away from the garment while executing the following steps.

Start with the left front. Use a 20" (50cm) or longer #5 separating zipper. Depending on the desired effect, the top of the zipper can be aligned with the bustline or the yoke seam. Determine your placement preference before applying the zipper.



- With the binding extended away from the garment, place the zipper face down on the **lining side** of the jacket **left front**. This is a bit of spatial gymnastics. Unzip and remove the half of the zipper with the zipper tab and set it aside.
- Carefully pin the left half of the zipper face down on the **binding as shown**, keeping the binding opened out and away from the garment.
- The edge of the zipper tape should be even with seamline that joins the binding to the jacket. The stop at the top of the zipper should be even with yoke seam or bustline.
- Fold under the top of the zipper tape at a 45° angle.
- Hand baste zipper through all layers.
- With a zipper foot, machine stitch 1/8" (3mm) from zipper teeth through all layers. Follow guidelines on the zipper tape.
- Stitch again very close to the edge opposite the zipper teeth, making sure to catch the top triangle where zipper is folded at a 45° angle.



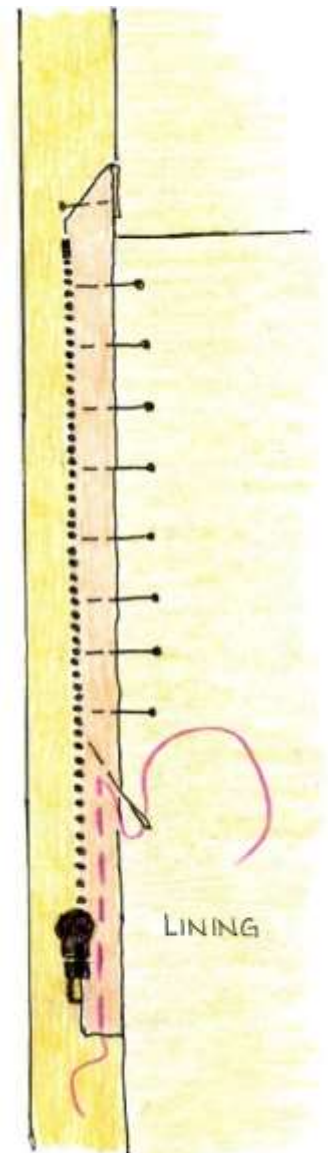
- Zip right half of zipper onto the left half. Bring the two fronts of the garment together, center fronts touching, front of jacket facing up. Binding strips will be in the way, you won't be able to actually see the zipper. Use this to help position right half of zipper onto the right half of garment, matching bottom edges of jacket and yoke seams. Feel through for the zipper and place a couple of anchoring pins from the right side to hold right half of zipper into position. Binding will be annoying, just aim for the best placement for the right half of the zipper.

- Carefully unzip zipper, keeping anchor pins in place.

- With wrong side of garment facing out, pin right half of zipper to the binding as with the left half. Edge of the zipper tape should be even with the seamline where the

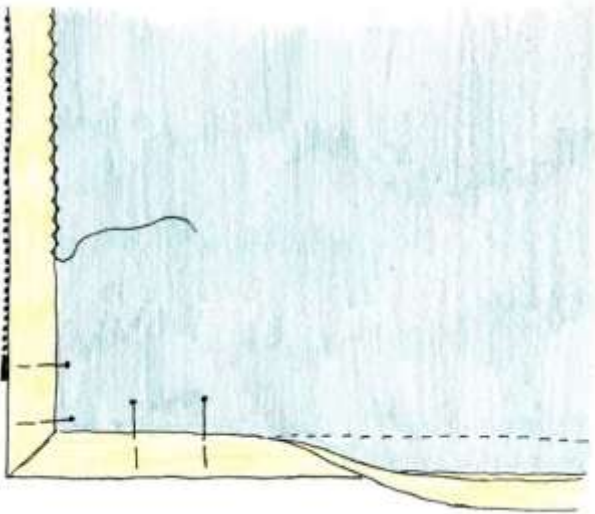
binding was attached. Carefully remove anchor pins once placement is established.

- Fold under the top of the zipper tape at a 45° angle.
- Hand baste zipper through all layers.
- Re-check zipper position by zipping the two halves of the zipper together. Make sure yoke seams and lower edges are even. Unzip zipper.
- With a zipper foot, machine stitch 1/8" (3mm) from zipper teeth through all layers following the guidelines on the zipper tape. Stitch to within 3" (7.5cm) of zipper slider, leave needle in fabric, lift presser foot, and carefully pull zipper slider up past the presser foot. Lower the foot and continue stitching.
- Stitch again very close to the edge opposite the zipper teeth, making sure to catch the top triangle where zipper is folded at a 45° angle.



FINISH THE BINDING:

- Starting at or near the center back, turn under binding raw edge ½”(1.2cm) or less, and fold and pin binding in place so the folded edge just covers the stitching line. Finished binding width should be ½”(1.2cm). **Note: if the binding is too wide, trim ¼”(6mm) from the edge so it will fold more easily.**



- Form the corners into miters and hold with pins.

- Working on the outside of the jacket, stitch binding in place through all layers, using whatever stitch you prefer.

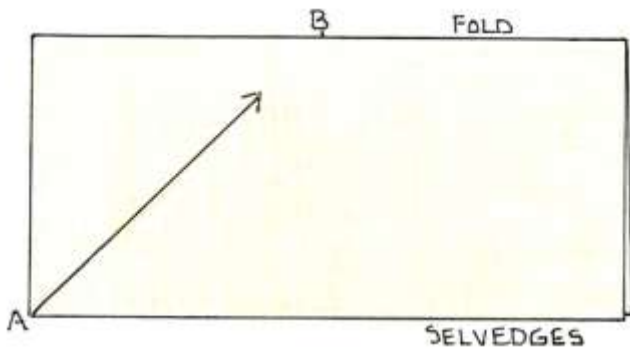
TIP: It would be helpful to sample first to see what your machine can do. Many machines have stitch length and width adjustments for their decorative stitches and some have a mirror image function to flip stitches that only lean left or right.



Experiment with a narrow zig-zag, appliqué stitch, straight stitch, hem stitch, or if desired, by hand with a slipstitch.

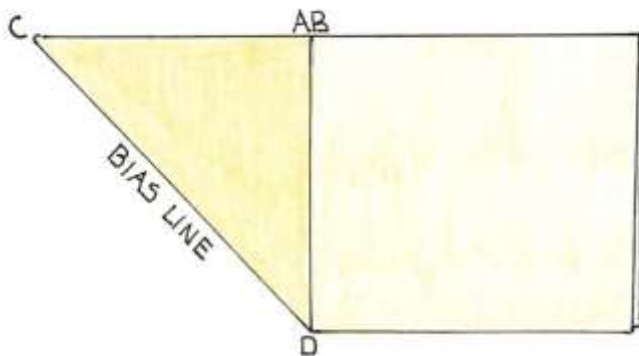
- Finish applying binding to bottom edge of sleeves as above.

HOW TO CUT BIAS STRIPS:

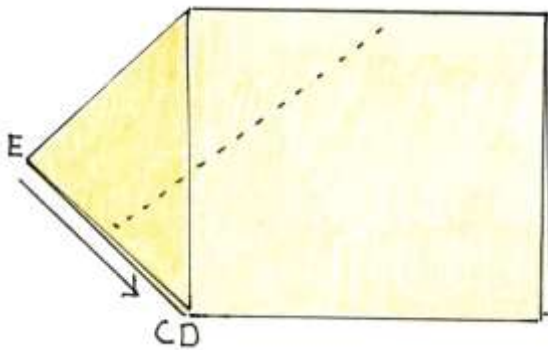


Start with a straightened folded length of lining fabric. $\frac{3}{4}$ yard (68cm) will yield about 10 yards (9.1m) of $2\frac{1}{4}$ " (5.7cm) -wide bias strips.

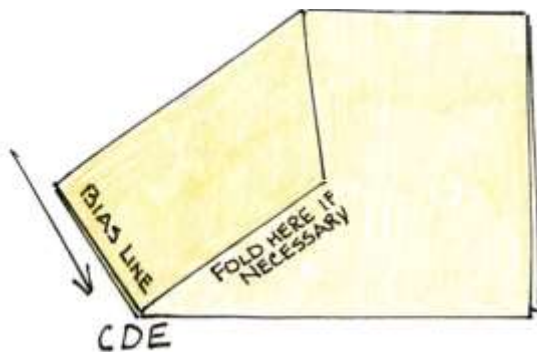
Bring both layers of corner A to B creating a 45° angle, which is the true bias.



Bring corner C to D, folding the bias line in half.



Repeat that fold, bringing E to C and D, folding the bias line in half again.



Fold up any remainder of the fabric if necessary.

Use a rotary cutter and ruler or a pair of scissors to trim off the fold. Working parallel to the trimmed edge, cut $2\frac{1}{4}$ " (5.7cm) -wide bias strips.

