



DARYL LANCASTER
FIBER ARTIST

6 Utne Court
Lincoln Park, NJ 07035
973-706-7745

theweaver@weaversew.com
www.weaversew.com
www.weaversew.com/wordblog



3 Day Workshop/ Category: Garments

JUMPSTART JACKET



Dust off your sewing machine and jumpstart your skills. This simple unlined jacket is custom fit, guaranteed to look great, feel good, and teach you the basics of garment construction. Great for handweavers, felters and surface designers, this jacket looks good in all fabrics and compliments every figure.

For more experienced sewers, consider adding a shawl collar!

For those who have made a jacket with me in another class, or are reasonably sure of their garment construction skills, the tunic is another option. A little trickier to sew, this is a fun silhouette especially from your handwoven fabric!

ALL LEVELS ARE WELCOME (Those making the tunic should have intermediate garment skills.)

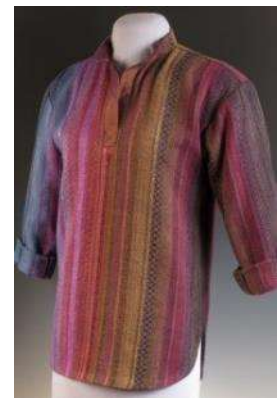
MAXIMUM ENROLLMENT: 12

MATERIALS FEE: \$25.00 INCLUDES SHOULDER PADS, TWILL TAPE, INTERFACING, PATTERN PAPER AND HANDOUT

SUPPLY LISTS:

Facility should provide:

- A cafeteria size table for each student and two for the instructor.
- Access to electricity for sewing machines and irons.



- 2 or 3 irons and ironing boards
- A full-length mirror
- Garment rack.
- A tailor's ham and sleeve roll
- A sewing machine should be made available for any student who can't bring one to class due to travel restrictions.
- A screen, extension cord and power strip for the digital presentations. **I supply the LCD projector and laptop.**

b. Students should bring: (PLEASE LABEL EVERYTHING WITH YOUR NAME!)

- A CARDBOARD CUTTING BOARD WITH PRINTED GRID IF POSSIBLE Usually available from www.ioann.com **Wrights Cardboard Pattern Cutting Board-36"X60"**, (If one is not available, a large piece of corrugated cardboard can work, ideally 36" x 60".) Note: This is for tracing patterns, a rotary cutting board will not work.
- A SMALL ROTARY CUTTING BOARD AND ROTARY CUTTER (OPTIONAL)
- 2 OR 3 GOOD QUALITY COLORED PENCILS (eg. Sanford Prismacolor)
- PUSH PINS
- SEE-THRU STRAIGHT EDGE RULER
- TAPE MEASURE
- PORTABLE SEWING MACHINE PREFERABLY WITH INSTRUCTION MANUAL, EXTRA NEEDLES (size 14), AND BOBBINS. TRY TO BECOME FAMILIAR WITH ITS OPERATION AND OIL IT IF YOU HAVEN'T IN A LONG TIME! Optional: If you have a walking/dual feed foot, please bring it.
- EXTENSION CORD AND POWER STRIP
- 6" SEAM GAUGE (THE KIND WITH THE SLIDING MARKER)
- THREAD TO MATCH YOUR FABRIC (use long staple polyester thread like Guttermen, you will need one 500 meter spool or two small spools)
- CONTRASTING THREAD FOR TAILOR'S TACKS
- BALL HEADED QUILTERS PINS
- GOOD SCISSORS OR DRESSMAKERS SHEARS (my favorite is Gingher Lightweight G-8F)
- EMBROIDERY SCISSORS (eg. Gingher 4")
- HAND SEWING NEEDLES AND THIMBLE IF YOU USE ONE
- CAKE OF BEESWAX
- NOTEBOOK AND PEN (a highlighter is helpful too)
- PRESS CLOTH (OLD MEN'S HANDKERCHIEF WORKS GREAT)
- For the Jacket: 1 YD. of LINING FABRIC (45" wide) for pocket lining and seam finishing. Pick something fun that will show off those fabulously finished seams. Most lining fabric will do, silk, rayon, acetate, cotton, polyester, whatever you can find. Try to pick something crisp, instead of slippery.
- A HANGER for the finished garment!

REQUIREMENTS FOR FABRIC:

Fabrics should be suitable for garment construction. Any stable fabric will work here, part of the class is to make what you create work for clothing. Think dense. E.g. 8/2 Tencel should be sett at 36 epi. Really. Try 10/2 cotton at 30-32epi. 5/2 at 20-24. Structure makes a difference. Denser for twills and things with floats. Zephyr Merino and silk can be sett looser, e.g. 24 epi, because Zephyr can be full'd to give a dense crisp fabric. Try tencel or cotton in the warp and Zephyr in the weft.

Finishing is important. **ALL FABRICS SHOULD BE WASHED PRIOR TO CLASS!** The exception here would be fabrics that were processed, dyed, felted, steamed, etc. They would already be preshrunk. If using handwoven fabric, or something commercial that has not been in

contact with moisture, steam, water, whatever, please machine wash your completed fabric **AT A MINIMUM** on **GENTLE CYCLE** for 3 minutes in **COLD OR WARM WATER** using a laundry detergent. This is even suitable for wool and mohair. Fabric may be hung to dry or machine dried if the fabric warrants this type of processing. Test, Test, Test! When fabric is completely dry, it should be steam pressed. You could even have the dry cleaner press it if your iron is inadequate.

If you are unsure of your sewing skills or you do not have the time to weave, felt or dye some kind of fabric, you may purchase a commercial fabric. Choose something that would give a similar result to what you usually like to work with. This fabric must be preshrunk as well. Place in Hot water for 20 minutes and then spin off or roll in a towel and hang to dry or machine dry if appropriate.

FOR THE BASIC JACKET/NECK BAND, HIP LENGTH:

- Fabric should be approximately 6 yards x 24" wide or 4 yards x 36" – 45" wide or 2 yards x 60" wide **AFTER WASHING**. Remember fabric can shrink as much as 30% when washed so in order to ensure everyone will have enough fabric for their jacket, samples, mistakes, swatches, etc., use the above guidelines as minimums. I would rather have leftover fabric than not enough.
- **IN ADDITION:** 1 YD. of LINING FABRIC (45" wide) for pocket lining and seam finishing. Pick something fun that will show off those fabulously finished seams. Any lining fabric will do, silk, rayon, acetate, cotton, polyester, whatever you can find, as long as it is lighter in weight than the outer fabric. **PRESHRINK FABRIC IN HOT WATER BEFORE CLASS.** (Place in hot tap water for about 20 minutes, roll in towel, hang to dry.)
- If a full lining is desired, please bring approximately 3 yards of a suitable lining fabric. Directions will be given for inserting a lining. **PRESHRINK FABRIC IN HOT WATER BEFORE CLASS.** (Place in hot tap water for about 20 minutes, roll in towel, hang to dry.)
- If a longer length is desired, additional fabric will be needed. If making the **optional shawl collar** please bring an additional yard of fabric.

FOR MORE EXPERIENCED STUDENTS WHO ARE MAKING THE TUNIC:

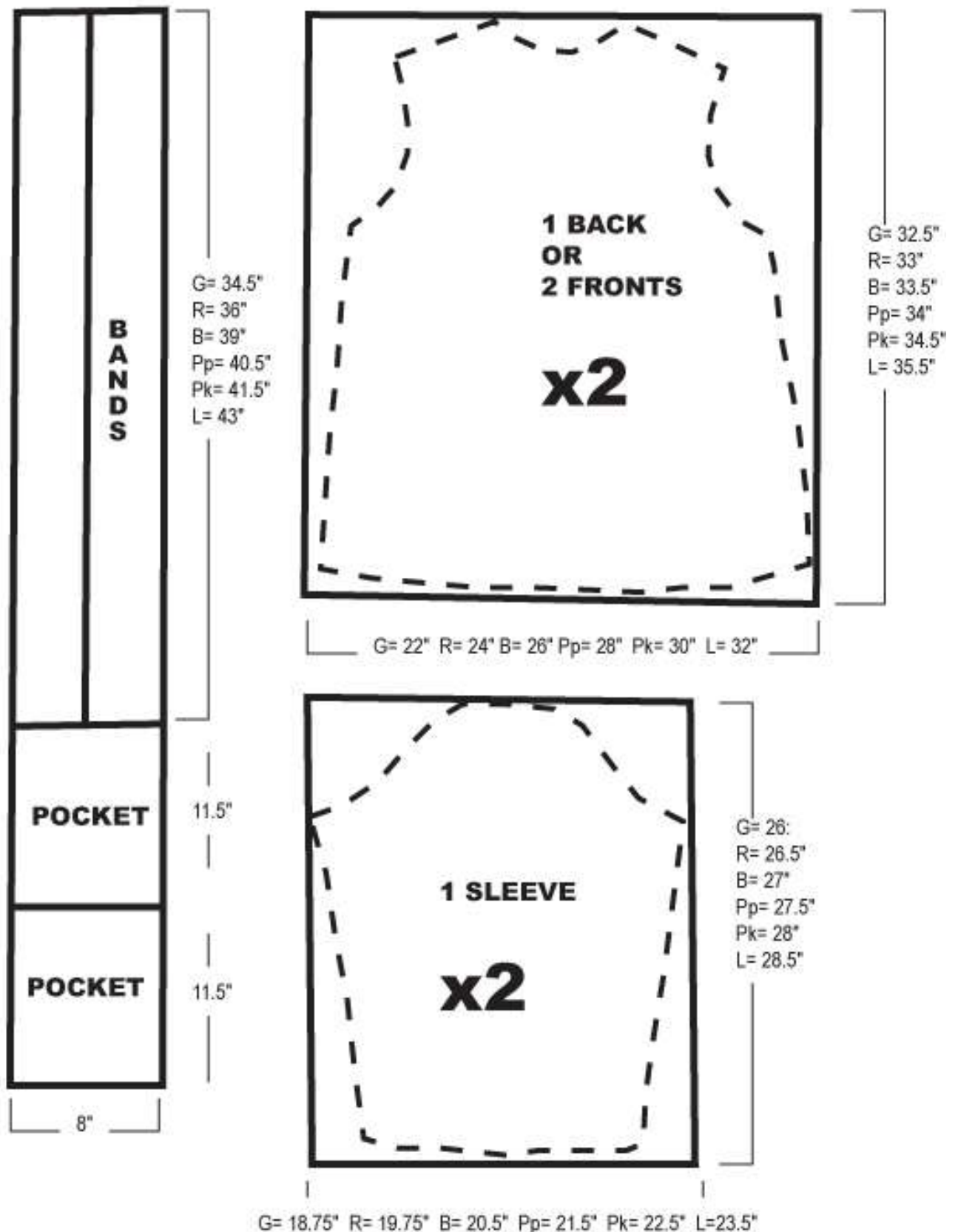
- 20" wide fabric - **6 yards AFTER WASHING** (Note: will require center front and back seams and piecing of part of the sleeves for larger sizes. 32" – 45" wide fabric – **4 yards AFTER WASHING**, 60" wide – **2 yards AFTER WASHING**, Smaller sizes may need less fabric.
- 1/2 YD. of COORDINATING OR CONTRASTING FABRIC (45" wide) for front plackets, collar and yoke lining. This fabric should be crisp and stable. It will be seen from the right side of the garment. **PRESHRINK FABRIC IN HOT WATER BEFORE CLASS.** (Place in hot tap water for about 20 minutes, roll in towel, hang to dry.)

FOR FELTERS MAKING A JACKET:

- See the template below for approximate sizes for each panel. Felt a panel for each garment section rather than try to and create yardage. Felt should be stable, suitable for a lightweight jacket or outerwear. We will try to maintain the natural edge in hand felt for seam and edge finishes. The colors refer to sizing. Use your hip measurement to determine which color would work best. (Hip Measurement + 4-6" ease) ÷ 2 = back panel width.

Any questions? Please email me, theweaver@weaversew.com

TEMPLATE FOR FELT JACKET



G = GREEN R= RED B= NAVY BLUE Pp= PURPLE Pk= PEACOCK BLUE L= LIME GREEN